

Mobile App

## Pocket GOT Operating Manual

---

- GOT3000 Series (GT37)
- GOT2000 Series (GT27, GT25, GT23, and GT21)
- GT SoftGOT3000
- GT SoftGOT2000
- GOT SIMPLE Series (GS25 and GS21)
- Android<sup>™</sup>
- iOS
- iPadOS



# SAFETY PRECAUTIONS

---

Always read the precautions before using this product.

Also read this manual and the relevant manuals mentioned in this manual carefully, and use the product properly while paying full attention to safety.

Note that the precautions in this manual apply only to this product.


The safety precautions are divided into the following levels: warnings and cautions.



Indicates that incorrect handling may cause hazardous conditions, resulting in death or severe injury.



Indicates that incorrect handling may cause hazardous conditions, resulting in minor or moderate injury or property damage.

Note that failure to observe  CAUTION may lead to a serious accident depending on the circumstances.

Make sure to observe both warnings and cautions to ensure personal safety.

Ensure that this manual is easily accessible to all users of this product.

## [Precautions for Remote Control]

---

### **WARNING**

- Remote control is available through a network by using GOT functions, including the SoftGOT-GOT link function, the remote personal computer operation function, the VNC server function, and the GOT Mobile function.

If these functions are used to perform remote control of control equipment, the field operator may not notice the remote control, possibly leading to an accident.

In addition, a communication delay or interruption may occur depending on the network environment, and remote control of control equipment cannot be performed normally in some cases.

Before using the above functions to perform remote control, fully grasp the circumstances of the field site and ensure safety.

- When operating the server (GOT) of the GOT Mobile function to disconnect a client, notify the operator of the client about the disconnection beforehand.

Not doing so may cause an accident.

## [Design Precautions]

---

### **WARNING**

- To maintain the security (confidentiality, integrity, and availability) of the GOT and the system against unauthorized access, DoS<sup>\*1</sup> attacks, computer viruses, and other cyberattacks from unreliable networks and devices via network, take appropriate measures such as firewalls, virtual private networks (VPNs), and antivirus solutions.

Mitsubishi Electric shall have no responsibility or liability for any problems involving GOT trouble and system trouble by unauthorized access, DoS attacks, computer viruses, and other cyberattacks.

<sup>\*1</sup> DoS: A denial-of-service (DoS) attack disrupts services by overloading systems or exploiting vulnerabilities, resulting in a denial-of-service (DoS) state.

## [Precautions for Exclusive Authorization Control]

---

### **WARNING**

---

- Make sure to fully understand the GOT network interaction function before using this function to control the authorization among pieces of equipment to prevent simultaneous operations.  
The exclusive authorization control of the GOT network interaction function can be enabled or disabled for each screen. (For all screens, the exclusive authorization control is disabled by default.) Properly determine the screens for which the exclusive authorization control is required, and set the control by screen.  
A screen for which the exclusive authorization control is disabled can be operated simultaneously from pieces of equipment. Make sure to determine the operation period for each operator, fully grasp the circumstances of the field site, and ensure safety to perform operations.
-

# CONTENTS

SAFETY PRECAUTIONS .....	1
INTRODUCTION .....	5
RELEVANT MANUALS .....	5
TERM .....	6
<b>CHAPTER 1 FEATURES</b>	<b>7</b>
<b>CHAPTER 2 INSTALLATION PROCEDURE OF POCKET GOT</b>	<b>11</b>
2.1 Pocket GOT (Android Version) .....	11
Download from Google Play .....	11
Update .....	11
Compatible versions .....	11
Uninstallation .....	11
2.2 Pocket GOT (iOS and iPadOS versions) .....	12
Download from App Store .....	12
Update .....	12
Compatible versions .....	12
Uninstallation .....	12
<b>CHAPTER 3 START AND DISPLAY SCREEN OF POCKET GOT</b>	<b>13</b>
<b>CHAPTER 4 SETUP EXAMPLE FOR USING POCKET GOT</b>	<b>17</b>
4.1 GOT Settings .....	18
GOT3000 series .....	18
GOT2000 series .....	20
4.2 Mobile Terminal Settings (Wi-Fi Setting) .....	23
4.3 Registration of Basic Settings .....	25
4.4 Registration of Alarm Notification Setting .....	28
4.5 Working Memo Transmission Setting .....	30
4.6 GOT Mobile Connection Setting .....	31
4.7 Updating and Deleting the Connection Setting .....	32
<b>CHAPTER 5 ALARM RECEPTION</b>	<b>33</b>
5.1 Checking Received Alarms .....	33
5.2 Checking Alarms of Each GOT .....	38
5.3 Changing the GOT to be Monitored .....	41
5.4 Reordering the Icons in the Connected GOT List .....	42
5.5 Receiving Notifications on a Smart Watch via the Mobile Terminal .....	44
5.6 Precautions .....	45
<b>CHAPTER 6 SENDING WORKING MEMO</b>	<b>49</b>
6.1 Working Memo Screen Display .....	49
6.2 Functions of Working Memo .....	50
6.3 Menu for Working Memo .....	51
6.4 Interacting with Process Remote Monitoring .....	52
6.5 Precautions .....	53

<b>CHAPTER 7</b>	<b>DISPLAYING MOBILE SCREEN</b>	<b>55</b>
7.1	How to Display Mobile Screen .....	55
<b>CHAPTER 8</b>	<b>PERFORMING THE OPERATION CONFIGURED FOR THE CONTACTLESS TAG</b>	<b>57</b>
8.1	Procedure for Reading the Operating Settings .....	57
8.2	[Reading results] Screen .....	58
<b>CHAPTER 9</b>	<b>TROUBLESHOOTING</b>	<b>59</b>
<b>CHAPTER 10</b>	<b>RESTRICTIONS</b>	<b>63</b>
<b>CHAPTER 11</b>	<b>OPEN SOURCE SOFTWARE</b>	<b>65</b>
11.1	Acr.UserDialogs .....	65
11.2	Newtonsoft.Json .....	65
11.3	ReactiveProperty .....	65
11.4	System.ComponentModel.Annotations .....	66
11.5	Microsoft.Maui.Controls .....	66
11.6	Microsoft.Maui.Controls.Compatibility .....	66
11.7	Mopups .....	67
11.8	CommunityToolkit.Maui .....	67
11.9	.NET Runtime .....	67
11.10	.NET MAUI .....	68
<b>CHAPTER 12</b>	<b>Upgraded Additional Function List</b>	<b>69</b>
REVISIONS	.....	71
INTELLECTUAL PROPERTY RIGHTS	.....	72

# INTRODUCTION

Thank you for downloading Pocket GOT Mobile App (hereafter referred to as Pocket GOT).

This manual describes the features of Pocket GOT, installation procedure, uninstallation procedure, and how to use the app. Before using the product, read this manual carefully and make sure you understand the functions and performance of Pocket GOT for correct use.

## RELEVANT MANUALS

The following shows the manuals relevant to this product.

If you need the printed manuals, consult your local sales office.

### Manual list



e-Manual refers to the Mitsubishi Electric FA electronic book manuals that can be browsed using a dedicated tool.

e-Manual has the following features:

- Required information can be cross-searched in multiple manuals.
- Other manuals can be accessed from the links in the manual.
- Hardware specifications of each part can be found from the product figures.
- Pages that users often browse can be bookmarked.
- Sample programs can be copied to the engineering tool.

### ■GOT manuals

Applicable product series	Manual name	Manual number	Format
GOT3000 series	GT Designer3 (GOT3000) Screen Design Manual	SH-082590ENG	PDF e-Manual
	GT SoftGOT3000 User's Manual	SH-082594ENG	PDF e-Manual
GOT2000 series	GT Designer3 (GOT2000) Screen Design Manual	SH-081220ENG	PDF e-Manual
	GT SoftGOT2000 Version1 Operating Manual	SH-081201ENG	PDF e-Manual

### ■Manual related to iQ Monozukuri Process Remote Monitoring

Manual name	Manual number	Format
Instruction manual for iQ Monozukuri Process Remote Monitoring	SH-082168ENG	PDF e-Manual

# TERM

Unless otherwise specified, this manual uses the following terms.

Term	Description
Pocket GOT	A mobile application. The application runs on Android, iOS, and iPadOS.
iQ Monozukuri Process Remote Monitoring	An application package to collect multiple production line information on a personal computer through the on-site GOTs and display the information on a GT SoftGOT2000 module in the computer to monitor the lines or manage the process
Working memo	Information recorded using the working memo function of Pocket GOT Daily work reports, field equipment status reports, and other information can be recorded with texts and images from a mobile terminal.
User alarm	Alarms set by the user and collected on the GOT A user-created comment can be displayed as an alarm message when an alarm occurs. Pocket GOT's user alarm receive function enables you to check the user alarm occurring in the GOT on a mobile terminal.
GOT Mobile function	A function for monitoring connected devices from an information device (such as a tablet device) via GOTs
VNC server function	A function to operate GOTs remotely from a personal computer, which is in a remote location, via Ethernet using Virtual Network Computing (VNC)
GT SoftGOT3000	HMI software compatible with the GOT3000 series GT SoftGOT3000 is the software that has the same functions as the GOT3000 series and is used to display lamps, data, and messages on personal computers and panel controllers.
GT SoftGOT2000	HMI software compatible with the GOT2000 series GT SoftGOT2000 is the software that has the same functions as the GOT2000 Series and is used to display lamps, data, and messages on personal computers and panel controllers.
GT Designer3	GT Designer3 is software used to create screens for the GOT3000 and GOT2000 series.



# 1 FEATURES

## Receiving user alarms

Pocket GOT collects the status of user alarms occurring in a monitored GOT and notifies the user with sound or vibration if changes in the alarm statuses are detected.

Operating system	Alarm status
Android	<ul style="list-style-type: none"><li>• Occurred</li><li>• Checked</li><li>• Reset</li></ul>
iOS, iPadOS	<ul style="list-style-type: none"><li>• Occurred</li></ul>

The app also notifies the user of the app log with sound and vibration of the mobile terminal when failing to obtain alarms from the GOT.

Checked, Reset, and app logs are notified only when the mobile terminal is not in sleep mode. (Android devices only)

User alarms worth of up to 40 alarm IDs are displayed.

Up to five alarms can be displayed in one alarm ID.

Up to 20 GOTs can be registered in Pocket GOT.

By using the GOT Mobile function, you can check the status of the GOT where the user alarm has occurred on the mobile terminal.

For details on user alarms and the GOT Mobile function, refer to the following.

 GT Designer3 (GOT3000) Screen Design Manual

 GT Designer3 (GOT2000) Screen Design Manual

The following shows which models support alarm receiving and the GOT Mobile function.

○: Available, ×: Not available

Model	Availability
GT37	○
GT27	○
GT25	○
GT23	×
GT21	×
GT SoftGOT3000	○
GT SoftGOT2000	○ <sup>*1</sup>
GS25	○
GS21	×

<sup>\*1</sup> It is recommended to use GT SoftGOT2000 (Multiple channels) for GT SoftGOT2000.


### Point

Pocket GOT's user alarm receive function uses the GOT Mobile function to receive alarms.

To use the GOT Mobile function, purchase a GOT Mobile function license.

Register the purchased license number to the monitored GOT.

For details on registering the GOT Mobile function license, refer to the following.

 GT Designer3 (GOT3000) Screen Design Manual

 GOT2000 Series User's Manual (Utility)

 GOT Mobile Function License for GT SoftGOT2000 Registration Instructions

## Sending working memos

The working memos of Pocket GOT can be used to share the information on the on-site equipment and status report at the time of error occurrence.

The following working memos can be created with the mobile application Pocket GOT.

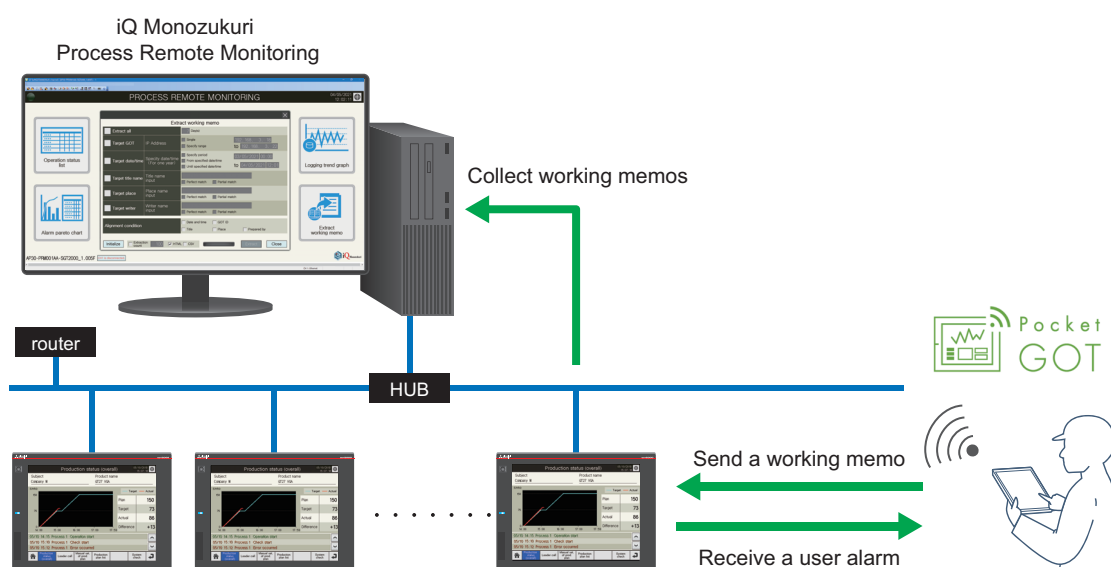
- Text memo
- Memo with pictures taken
- Memo with images saved in the mobile terminal

The created working memos can be sent to the connected GOT using the FTP function of the GOT and saved in the SD card installed in the GOT.

iQ Monozukuri Process Remote Monitoring collects the working memos saved in the SD card of the GOT so that they can be checked at once on the personal computer.

For details on iQ Monozukuri Process Remote Monitoring, refer to the following.

 Instruction manual for iQ Monozukuri Process Remote Monitoring



The following shows which models support working memo.

○: Available, △: Available to some models only, ×: Not available

Model	Availability
GT37	×
GT27	○
GT25	○
GT23	○
GT21	△ <sup>*1</sup>
GT SoftGOT3000	×
GT SoftGOT2000	×
GS25	○
GS21	○

<sup>\*1</sup> Only available to Ethernet compatible models.

## Performing the operation configured for the contactless tag


When you hold the mobile terminal over the GOT's contactless tag, you can perform the operation configured for the tag. This allows quick operations such as connecting to the GOT using the GOT Mobile function or contacting support in case of trouble.

Only one of the following operations can be performed.

- Launch a browser and connect to the GOT accessed by the GOT Mobile function.
- Launch the phone app and display the screen to call the configured number.
- Launch a browser and access the configured URL.
- Launch the SMS app and display the configured recipient and message.
- Launch the email app and display the configured recipient, subject, and body text.
- Display or copy the configured text.



For details on the contactless tag, refer to the following.

 GT Designer3 (GOT3000) Screen Design Manual

The GT37 is the only GOT model that supports contactless tags.

# MEMO



---

# 2 INSTALLATION PROCEDURE OF POCKET GOT

Install Pocket GOT to the mobile terminal.

The installation method differs depending on the OS used.

For details, refer to the following.

OS	Reference
Android	 Page 11 Pocket GOT (Android Version)
iOS, iPadOS	 Page 12 Pocket GOT (iOS and iPadOS versions)

2

## 2.1 Pocket GOT (Android Version)

Check Google Play for the operating environment of the Android OS mobile terminal to which Pocket GOT is to be installed.

### Download from Google Play

Download Pocket GOT from Google Play and install it to the mobile terminal.

1. Enter [Pocket GOT] or [MITSUBISHI ELECTRIC CORPORATION] in Google Play, and search for the Pocket GOT application.
2. Download the application to install Pocket GOT.

Check that the icon of Pocket GOT is displayed on the home screen.



### Update

Update Pocket GOT when the latest version is released.

After the update is complete, check that Pocket GOT is updated to the latest version.

### Compatible versions

Use the application on a mobile terminal running Android 9.0 to 15.0 (15.0 recommended).

### Uninstallation

Select Pocket GOT and uninstall it.

## 2.2 Pocket GOT (iOS and iPadOS versions)

---

Check the App Store for the operating environment for iOS or iPadOS on the mobile terminal where the application is installed.

### Download from App Store

---

Download Pocket GOT from App Store and install it on the mobile terminal.

1. Enter [Pocket GOT] or [MITSUBISHI ELECTRIC CORPORATION] in the App Store, and search for the Pocket GOT application.
  2. Download the application to install Pocket GOT.
- Check that the icon of Pocket GOT is displayed on the home screen.



### Update

---

Update Pocket GOT when the latest version is released.

After the update is complete, check that Pocket GOT is updated to the latest version.

### Compatible versions

---

Use the application on a mobile terminal running iOS 15 to 18 or iPadOS 15 to 18.

### Uninstallation

---

Select Pocket GOT and uninstall it.

# 3 START AND DISPLAY SCREEN OF POCKET GOT

Android screens are used in the explanations that follow.

## Starting Pocket GOT

Tap the icon of Pocket GOT on the home screen of the mobile terminal.



## Functions that require privileges

Privileges need to be granted to use certain mobile terminal functions.

Grant the privileges in the confirmation screen that appears when using these functions.

The required privileges differ depending on the OS as shown below.

○: Displayed, △: Displayed on some mobile terminals, ×: Not displayed

Function	OS	
	Android	iOS, iPadOS
Camera	○	○
Storage	△ (displayed on mobile terminals running Android 12 or earlier)	×
Notification	△ *1	△ *1
Location information	×	○
Local network	×	○

\*1 A notification privilege confirmation screen appears during the first start.  
The following shows the conditions under which the screen appears.

Software version, OS version	Display timing
Pocket GOT version 1.1.0.0 or later (Android version), and Android 13 or later	If battery optimization for Pocket GOT is enabled on the mobile terminal, the screen appears during the first start after the battery control disable request dialog is displayed.
Pocket GOT version 1.0.0 or later (iOS and iPadOS versions)	The screen appears during the first start after the terms of use are agreed upon.

## Battery optimization (Android only)

When battery optimization for Pocket GOT is enabled on the mobile terminal, the alarm acquisition cycle may become out of sync.

Therefore, disable battery optimization for Pocket GOT.

When battery optimization is enabled, the battery control disabling request screen is displayed at the following timings.

- At initial run of Pocket GOT
- When the all alarm monitor button is set to the ON state on the [Connected GOT list] screen of the mobile terminal with Android 12 or later

Tap [Setting] to cause transition to the mobile terminal's battery optimization setting screen.

### Check

If battery optimization is enabled, "All alarm monitor" may not be performed periodically. Press the "Setting" button to change the setting.

Cancel Setting

At the initial run with Android 11 or earlier

### Check

If battery optimization is enabled, "All alarm monitor" cannot be started. Press the "Setting" button to change the setting.

Cancel Setting

At the initial run with Android 12 or later or  
when the all alarm monitor button is  
set to the ON state

## When changing the mobile terminal settings (Android only)

If the mobile terminal settings are changed, the settings changed screen may appear.

Tap the [Check] button to exit the application.

Then, restart the application.

### Check

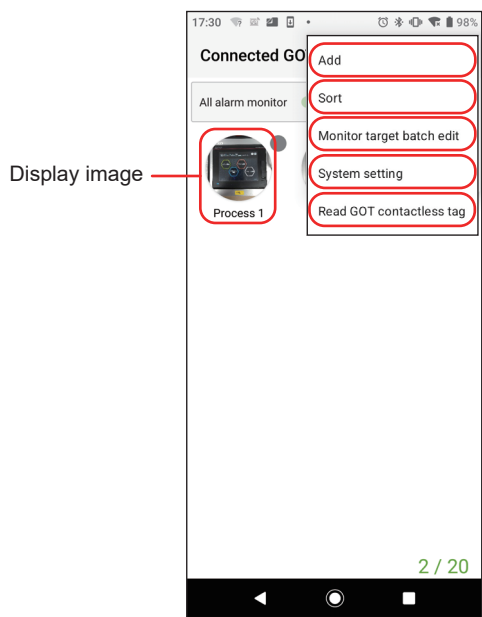
Please restart the application since equipment settings have been changed. All alarm monitoring has been stopped.

Check



Pocket GOT startup screen

When Pocket GOT is started, the [Connected GOT list] screen is displayed.

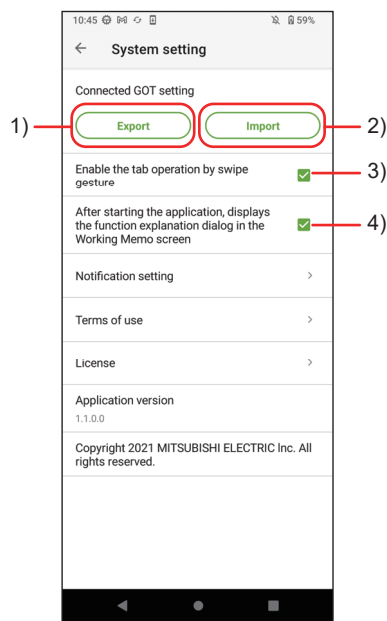


The following screens are displayed when the [Connected GOT list] screen is operated.

Operation menu	Display screen	Description
[Add]	[Connected GOT setting]	Configure the settings required to use Pocket GOT on the mobile terminal. ☞ Page 25 Registration of Basic Settings ☞ Page 28 Registration of Alarm Notification Setting ☞ Page 30 Working Memo Transmission Setting ☞ Page 31 GOT Mobile Connection Setting
[Sort]	[Sort connected GOT list] screen	Reorder the icons on the [Connected GOT list] screen. ☞ Page 42 Reordering the Icons in the Connected GOT List
[Monitor target batch edit]	[Monitor target batch edit] screen	Change the GOT to be monitored. ☞ Page 41 Changing the GOT to be Monitored
[System setting]	[System setting] screen	Change or check the settings for Pocket GOT. ☞ Page 16 System settings
[Read GOT contactless tag]	Contactless tag reading screen	Read the operation settings from the contactless tag. ☞ Page 57 PERFORMING THE OPERATION CONFIGURED FOR THE CONTACTLESS TAG
Display image	[Alarm list] tab	Check alarms for each GOT. ☞ Page 38 Checking Alarms of Each GOT
	[Working memo] tab	Send a working memo to the GOT. ☞ Page 49 SENDING WORKING MEMO

System settings

The following describes the system settings function.



No.	Item	Description
1)	[Export] button	Tap to export the registered connected GOT settings to the mobile terminal.
2)	[Import] button	Tap to import the connected GOT settings saved on the mobile terminal.
3)	[Enable the tab operation by swipe gesture]	Select this item to switch between the [Alarm list] tab and the [Working memo] tab.
4)	[After starting the application, displays the function explanation dialog in the Working Memo screen.]	Select this item to display the dialog that describes the working memo when the [Working memo] tab is displayed.

# 4 SETUP EXAMPLE FOR USING POCKET GOT

Connect Pocket GOT and the GOT by Ethernet in the following system configuration.

- Connection to the wired LAN port of the GOT via a commercially available wireless LAN router or wireless LAN access point
- Connection via a wireless LAN communication unit mounted on the GOT (GOT2000 series)

## Required devices

Prepare the following devices before configuring the settings.

- Personal computer on which GT Designer3 is installed
- GOT (Required GOT type depends on the system configuration.)
- Mobile terminal (Android, iOS, or iPadOS device) on which Pocket GOT is installed

4

## Setting procedure

The following describes the setting procedure to use Pocket GOT.

### 1. GOT settings

Configure the settings required for connection between the GOT and Pocket GOT.

☞ Page 18 GOT Settings

### 2. Mobile terminal settings

Configure the settings required for connection between the mobile terminal and the GOT.

☞ Page 23 Mobile Terminal Settings (Wi-Fi Setting)

### 3. Pocket GOT settings

Configure the settings required to use Pocket GOT on the mobile terminal.

☞ Page 25 Registration of Basic Settings

☞ Page 28 Registration of Alarm Notification Setting

☞ Page 30 Working Memo Transmission Setting


☞ Page 31 GOT Mobile Connection Setting

## 4.1 GOT Settings

Configure the GOT settings required to receive alarms and send working memos with Pocket GOT.  
Configure the settings with GT Designer3.

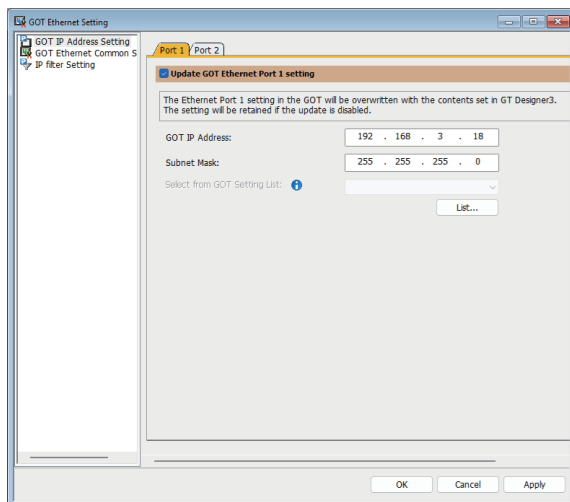
### GOT3000 series

For details on the setting method, refer to the following manual.

 GT Designer3 (GOT3000) Screen Design Manual

### GOT Ethernet interface

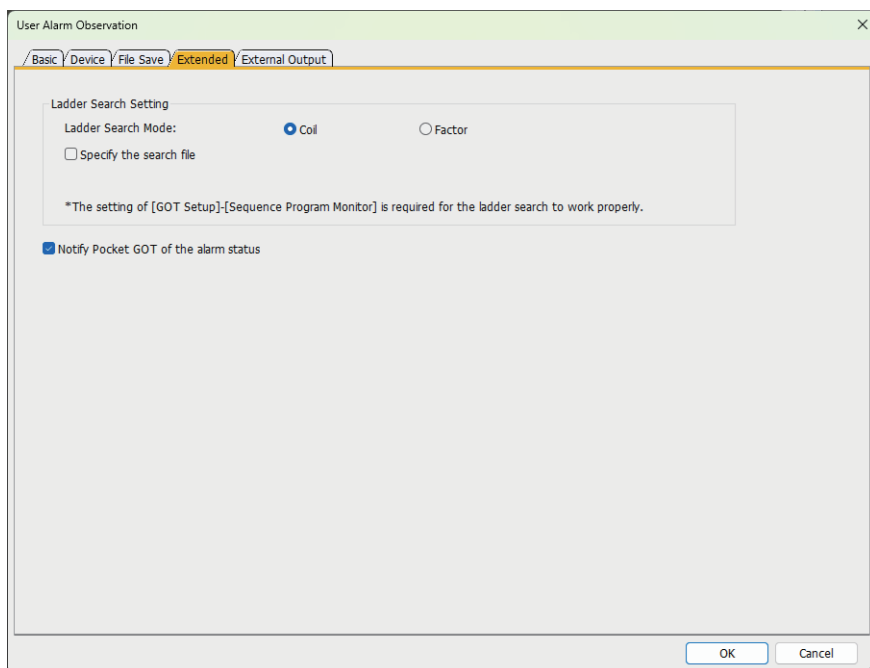
Configure the Ethernet interface settings for the GOT.



[GOT Ethernet Setting]

### User alarm monitoring

A user-created comment is displayed as an alarm message when an alarm occurs in the GOT.  
Pocket GOT receives and displays the alarm occurred in the connected GOT.

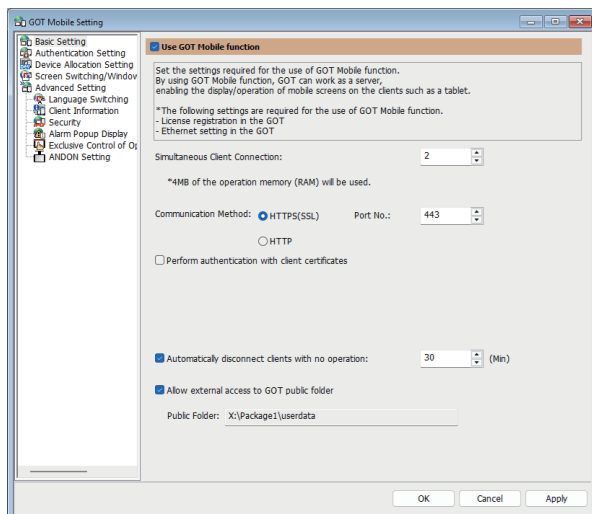


[User Alarm Observation]

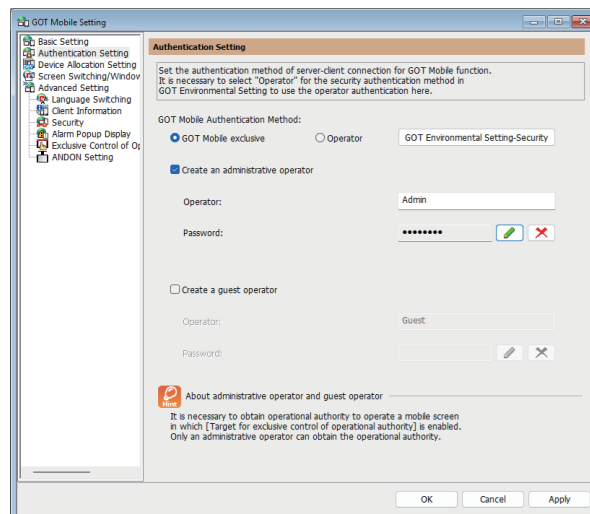
## GOT Mobile function

The GOT operates as a GOT Mobile function server.

Pocket GOT displays the mobile screen of the connected GOT on the browser of the mobile terminal.



[GOT Mobile Setting] ([Basic Setting])

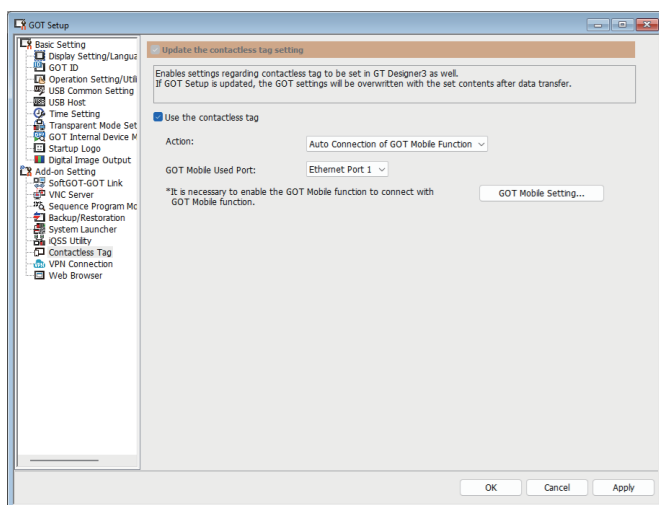


[GOT Mobile Setting] ([Authentication Setting])

## Contactless tag

Set the operation to be performed when the mobile terminal is held over the GOT's contactless tag.

Pocket GOT displays the information acquired from the contactless tag.



[Contactless Tag]

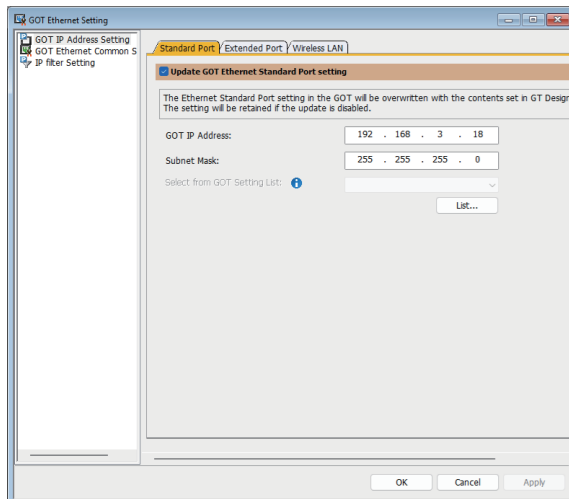
# GOT2000 series

For details on the setting method, refer to the following manual.

📖GT Designer3 (GOT2000) Screen Design Manual

## GOT Ethernet interface

Configure the Ethernet interface settings for the GOT.

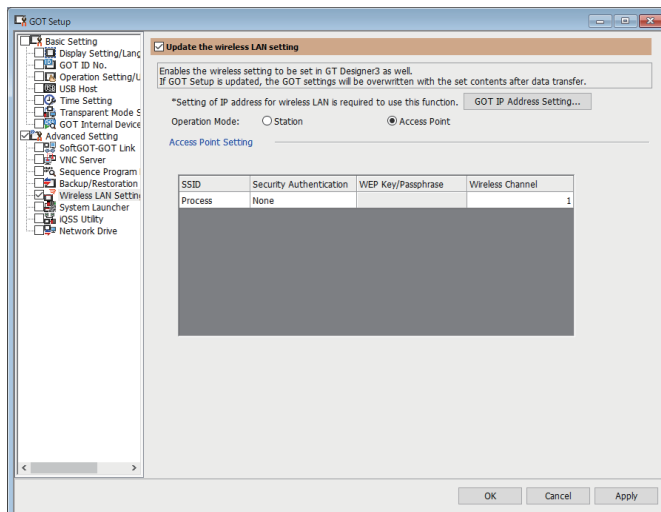


[GOT Ethernet Setting]

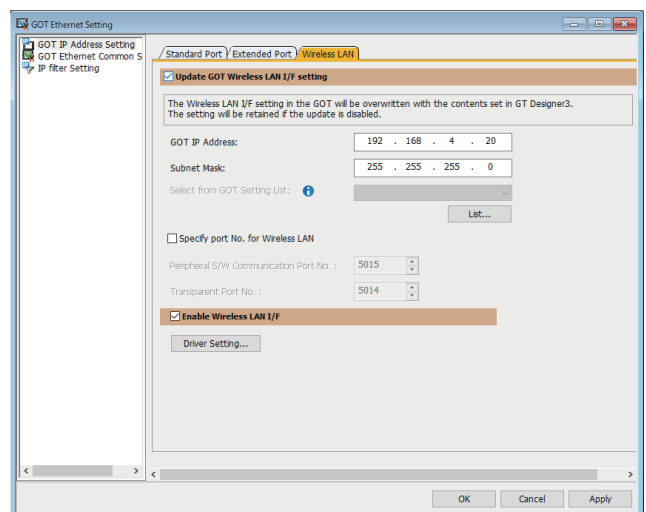
To use the wireless LAN function via the wireless LAN communication unit mounted on the GOT, configure the wireless LAN settings.

The GOT operates as a wireless LAN access point.

Connect Pocket GOT and the GOT for which the wireless LAN is set via Wi-Fi.



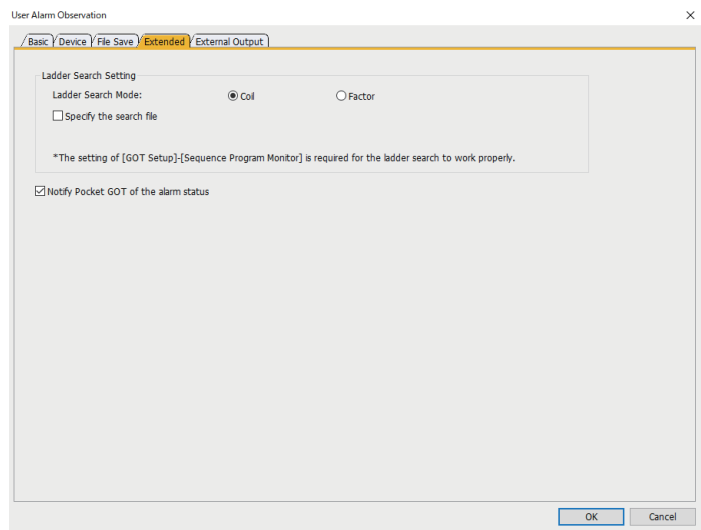
[GOT Setup]



[GOT Ethernet Setting]

# User alarm monitoring

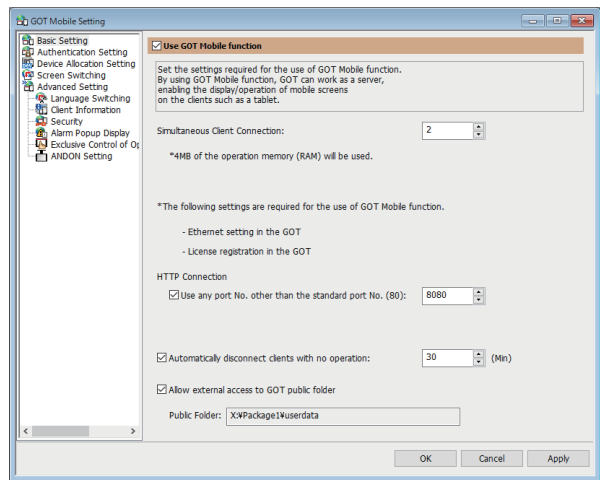
A user-created comment is displayed as an alarm message when an alarm occurs in the GOT.  
Pocket GOT receives and displays the alarm occurred in the connected GOT.



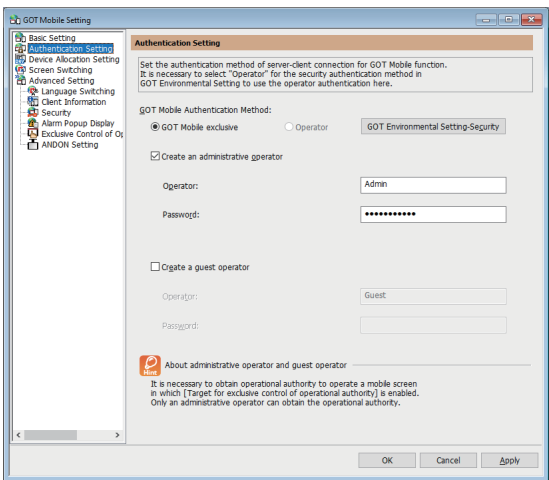
[User Alarm Observation]

# GOT Mobile function

The GOT operates as a GOT Mobile function server.  
Pocket GOT displays the mobile screen of the connected GOT on the browser of the mobile terminal.



[GOT Mobile Setting] ([Basic Setting])

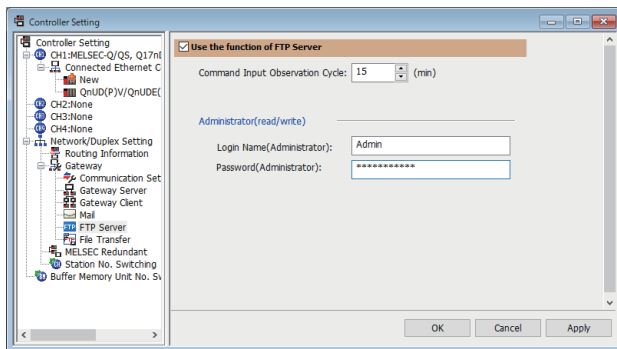


[GOT Mobile Setting] ([Authentication Setting])

## FTP server function

You can read/write files from/to an FTP client using the GOT as the FTP server.

Pocket GOT (FTP client) sends working memos to the FTP server (GOT), and saves the memos to the SD card inserted in the GOT.



[Controller Setting]



## 4.2 Mobile Terminal Settings (Wi-Fi Setting)

Configure the Wi-Fi settings on the mobile terminal to enable connection to the GOT.

The following shows an example of connection settings for using the GOT as a wireless LAN access point.

### Point

The Wi-Fi setting screen differs depending on the mobile terminal.

For the details, refer to the manual of the mobile terminal used.

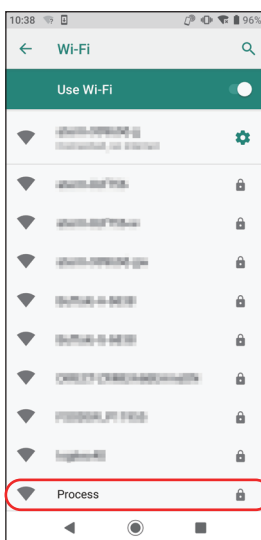
The following model is used in this chapter.

- Manufacturer: SHARP
- Model name: AQUOS Sense3 plus
- Model: SH-RM11
- OS: Android 9

4

### 1. Select the GOT to be used as the access point.

Display the Wi-Fi setting screen of the mobile terminal, and tap the name set in [SSID] in [GOT Setup] in GT Designer3.

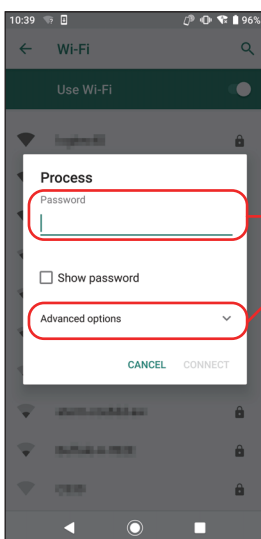


Tap the name set in [SSID]

### 2. Set the access point details.

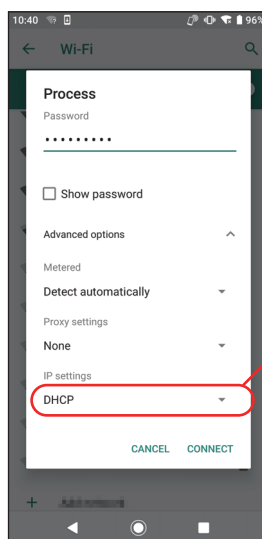
Enter [Password], tap [Advanced options], and change [IP settings] from [DHCP] to [Static].

Then, the IP address of the mobile terminal can be set.

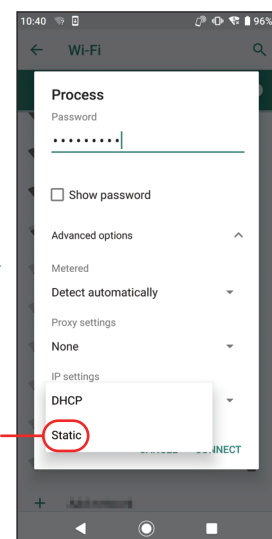


Enter [Password]

Tap [Advanced options]



Tap [DHCP] in [IP settings]



Tap [Static]

### 3. Set the IP address of the mobile terminal.

Set the first to third octets to the same values as the IP address of the GOT.

Set the fourth octet to a value different from the IP address of the GOT.

The following shows the setting example when the IP address of the GOT is set to [192.168.4.20].

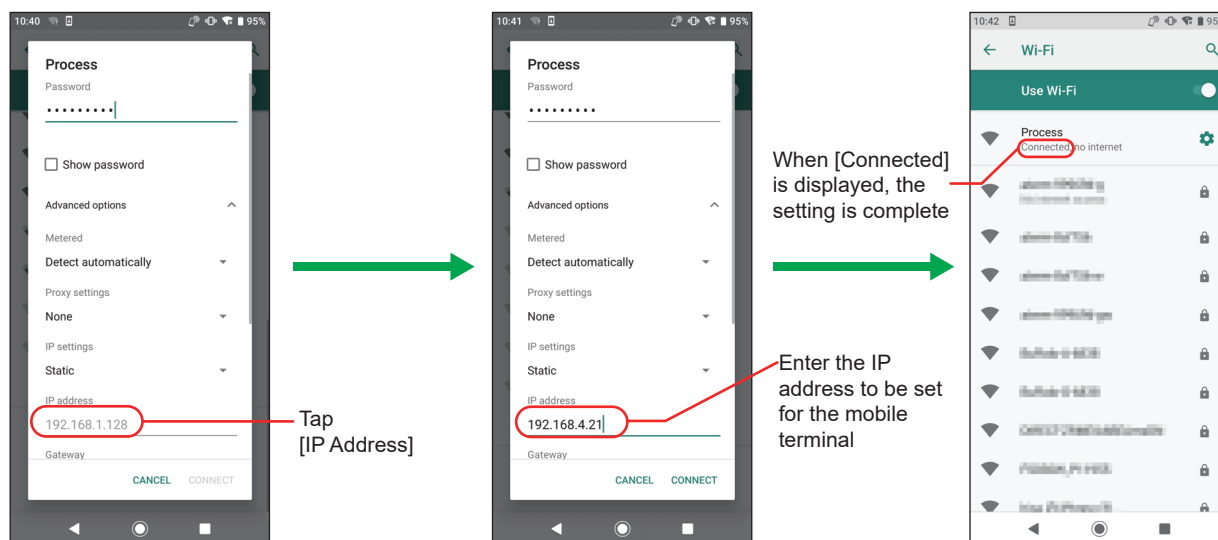
GOT IP address : 192.168.4.20

Mobile terminal IP address : 192.168.4.21

Set a different value from the GOT IP address

Set the same values as the GOT IP address

Return to the Wi-Fi setting screen. If [Connected] is displayed, the access point setting is complete.

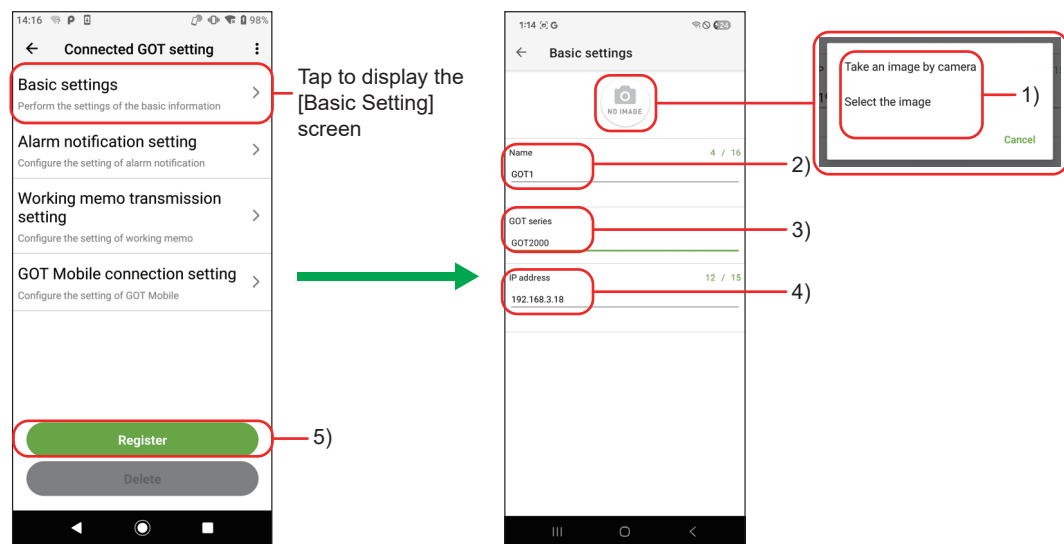


# 4.3 Registration of Basic Settings

Configure the settings required to register the basic settings of the connected GOT.

## Registration of a new connection

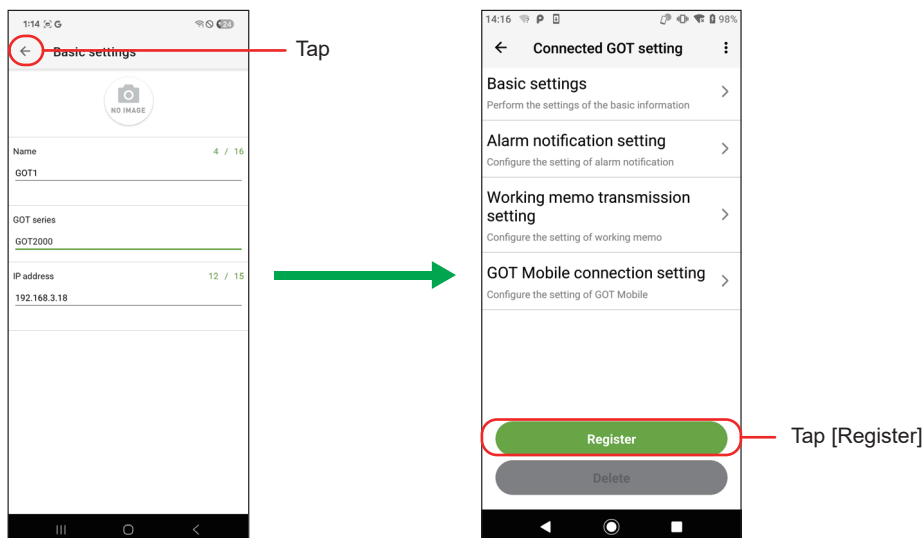
1. Tap [Basic settings] on the [Connected GOT setting] screen.
2. Set each item on the [Basic settings] screen.



No.	Item	Description
1)	Display image	Set the image to be displayed on the [Connected GOT list] screen. The available file extensions differ depending on the OS used. <ul style="list-style-type: none"><li>• For Android: bmp, png, jpg (jpeg)</li><li>• For iOS and iPadOS: png, jpg (jpeg), gif, tiff, HEIC</li></ul> For iOS, the following image files cannot be registered. <ul style="list-style-type: none"><li>• Files whose vertical or horizontal image size is larger than 10000 pixels</li><li>• Files larger than 50 MB</li></ul>
2)	[Name]	Set a name of the connected GOT.
3)	[GOT series]	Select the connected GOT series.
4)	[IP address]	Set the IP address of the connected GOT.
5)	[Register]	Register the information set on the [Basic settings] screen. If there is any problem with the settings, an error message is displayed.

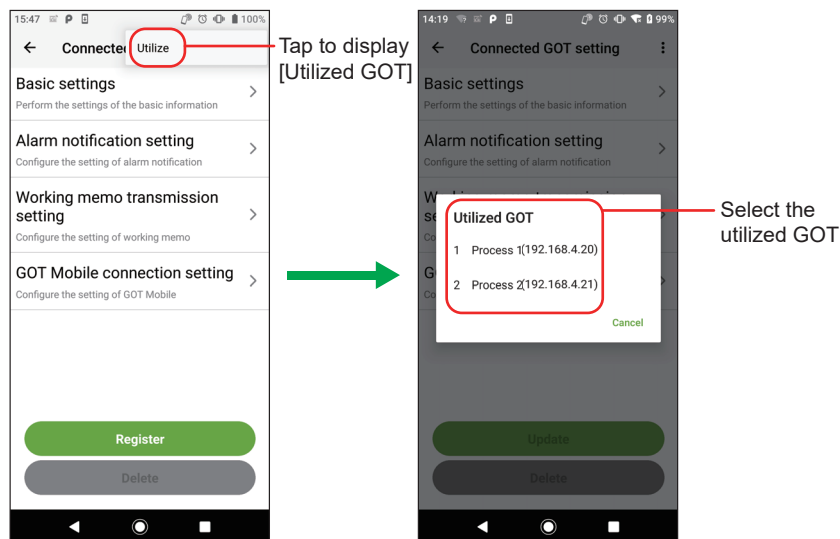
3. After entering each item, tap the arrow on the upper-left corner of the [Basic settings] screen to return to the [Connected GOT setting] screen.

Tap [Register] on the [Connected GOT setting] screen to complete the registration.

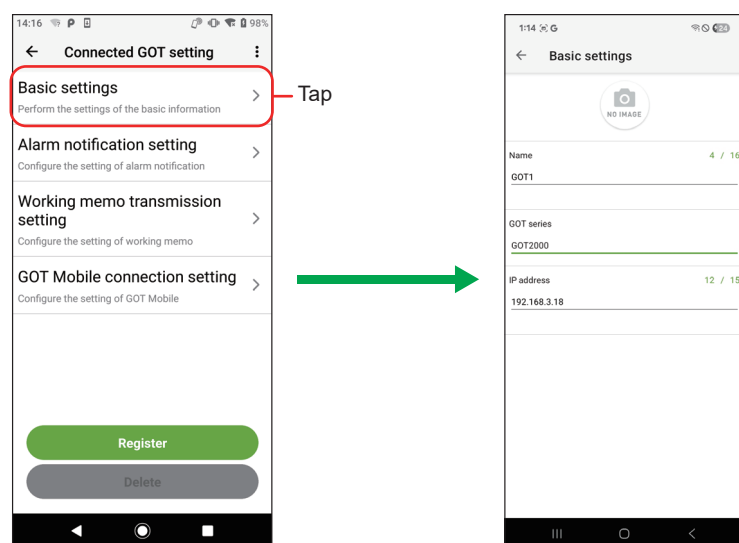


## Registration by utilizing the registered connection

1. Tap [Utilize] from the menu on the [Connected GOT setting] screen.
2. [Utilized GOT] is displayed. Select the source GOT from the list of registered GOTs.



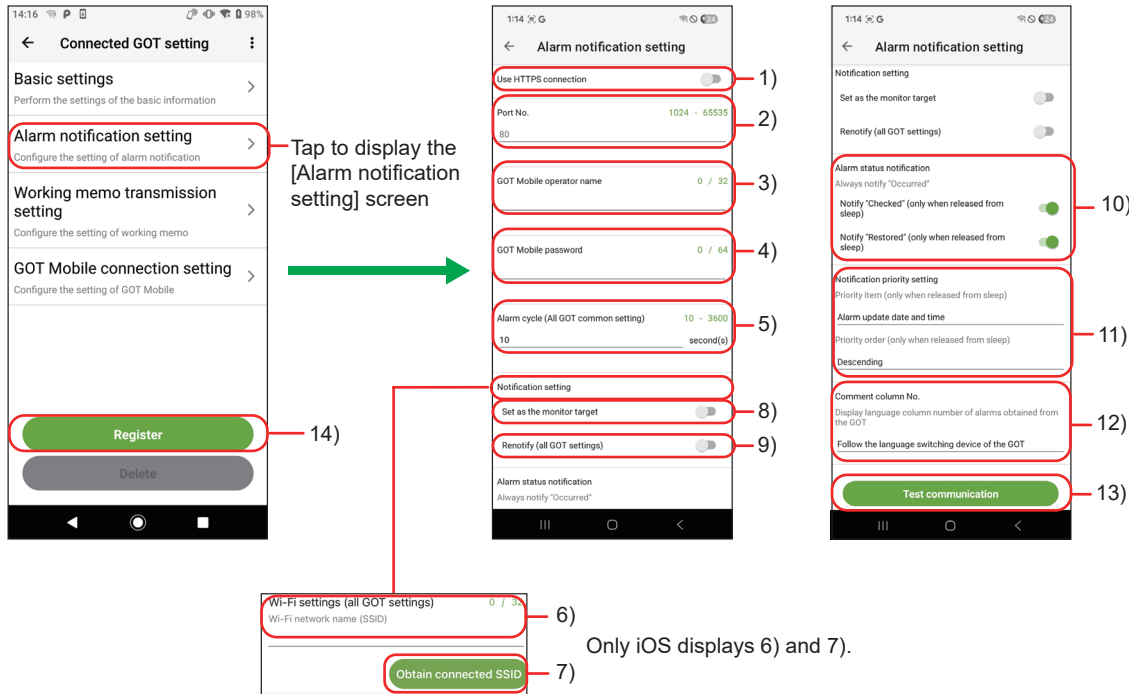
3. Tap [Basic settings] on the [Connected GOT setting] screen displayed. The [Basic settings] screen of the source GOT is displayed. Utilize the settings and register them. The items to be set are the same as those for a new registration.




## 4.4 Registration of Alarm Notification Setting

Configure the settings required to register the alarm notification setting.

1. Tap [Alarm notification setting] on the [Connected GOT setting] screen.
2. Set each item on the [Alarm notification setting] screen.



No.	Item	Description	Operating system
1)	[Use HTTPS connection]	An HTTPS connection is used for alarm monitoring and GOT Mobile connection. This setting appears only when [GOT3000] is selected for [Series] on the [Basic settings] screen. When this setting is changed to on or off, the setting for [Use HTTPS connection] on the [GOT Mobile connection setting] screen also changes.	• Android • iOS • iPadOS
2)	[Port No.]	Set the port number to communicate with the GOT. If left blank, the following will be displayed. • When [Use HTTPS connection] is enabled: 443 • When [Use HTTPS connection] is disabled, or [GOT series] is [GOT2000] on the [Basic settings] screen: 80	• Android • iOS • iPadOS
3)	[GOT Mobile operator name]	Set the operator name to log in to the GOT Mobile.	
4)	[GOT Mobile password]	Set the password to log in to the GOT Mobile. *2	
5)	[Alarm cycle (All GOT common setting)]	Set the alarm cycle.	
6)	[Wi-Fi settings (all GOT settings)]	Set the Wi-Fi network name (SSID) to monitor alarms monitored by the GOT while the application is running in the background.	• iOS • iPadOS
7)	[Obtain connected SSID]	Acquires and sets the name (SSID) of the Wi-Fi network to which the mobile terminal is connected. Tap the button to display the location information use permission screen. Allow the use of location information to acquire the connected SSID.	
8)	[Set as the monitor target]	Set the GOT as the monitor target.	• Android • iOS • iPadOS

No.	Item	Description	Operating system				
9)	[Renotify (all GOT settings)]	Set whether to re-notify the following items if remaining on the lock screen or home screen of the mobile terminal. <ul style="list-style-type: none"><li>• Alarm received notifications</li><li>• App logs</li></ul> Alarm re-notification is performed in the same cycle as the setting of [Renotify (all GOT settings)].	• Android				
10)	[Alarm status notification]	Set whether to notify the mobile terminal of the alarm status when an alarm is checked or reset. <ul style="list-style-type: none"><li>• [Notify "Checked" (only when released from sleep)]</li><li>• [Notify "Restored" (only when released from sleep)]</li></ul> Notification is not provided when the mobile terminal is in sleep mode. Even though this setting is disabled, only the alarms whose statuses are Occurred are notified in the following cases within one alarm cycle of Pocket GOT. <ul style="list-style-type: none"><li>• An alarm occurred and it was checked.</li><li>• An alarm occurred and it was reset.</li></ul> For notification when this setting is disabled, refer to the following.  Page 46 Alarms to be notified (Android only)					
11)	[Notification priority setting]	<div>If multiple alarms occur simultaneously in one connected GOT, the alarms are notified according to the settings for [Priority item (only when released from sleep)] and [Priority order (only when released from sleep)].</div> <div>If there are multiple high-priority alarms, the notifications are prioritized in the following order.</div> <div>1: Alarm occurrence date and time (descending order)</div> <div>2: Alarm ID (ascending order)</div> <div>3: Monitored alarm No. (ascending order)</div> <div>If the mobile terminal is in sleep mode, this setting is not applied. The alarm with the most recent occurrence date and time is prioritized.</div> <table><tr><td>[Priority item (only when released from sleep)]</td><td>Set the priority item for notification.<ul style="list-style-type: none"><li>• [Alarm update date and time]: Update date and time of the alarm occurred, checked, and reset</li><li>• [Level]: Level of the alarm</li><li>• [Alarm status]: Occurred, checked, or reset</li></ul></td></tr><tr><td>[Priority order (only when released from sleep)]</td><td>Set the priority order for the item set for [Priority item (only when released from sleep)]. *1<ul style="list-style-type: none"><li>• [Ascending]</li><li>• [Descending]</li></ul></td></tr></table>	[Priority item (only when released from sleep)]	Set the priority item for notification. <ul style="list-style-type: none"><li>• [Alarm update date and time]: Update date and time of the alarm occurred, checked, and reset</li><li>• [Level]: Level of the alarm</li><li>• [Alarm status]: Occurred, checked, or reset</li></ul>	[Priority order (only when released from sleep)]	Set the priority order for the item set for [Priority item (only when released from sleep)]. *1 <ul style="list-style-type: none"><li>• [Ascending]</li><li>• [Descending]</li></ul>	• Android
[Priority item (only when released from sleep)]	Set the priority item for notification. <ul style="list-style-type: none"><li>• [Alarm update date and time]: Update date and time of the alarm occurred, checked, and reset</li><li>• [Level]: Level of the alarm</li><li>• [Alarm status]: Occurred, checked, or reset</li></ul>						
[Priority order (only when released from sleep)]	Set the priority order for the item set for [Priority item (only when released from sleep)]. *1 <ul style="list-style-type: none"><li>• [Ascending]</li><li>• [Descending]</li></ul>						
12)	[Comment column No.]	Select the comment column No. to be displayed in the user alarm.	• Android • iOS • iPadOS				
13)	[Test communication]	Perform a test communication with the GOT.	• Android • iOS • iPadOS				
14)	[Register]	Register the information set in the [Connected GOT setting] screen.	• Android • iOS • iPadOS				

\*1 The following shows the ascending and descending orders for each priority item.

Priority item	Descending order	Ascending order
[Alarm update date and time]	Oldest to newest	Newest to oldest
[Level]	Lowest to highest	Highest to lowest
[Alarm status]	Checked → reset → occurred	Occurred → reset → checked

\*2 When [Series] is set to [GOT3000] on the [Basic Setting] screen, [GOT Mobile password] is left blank when the connection settings exported from the following versions of Pocket GOT are imported.

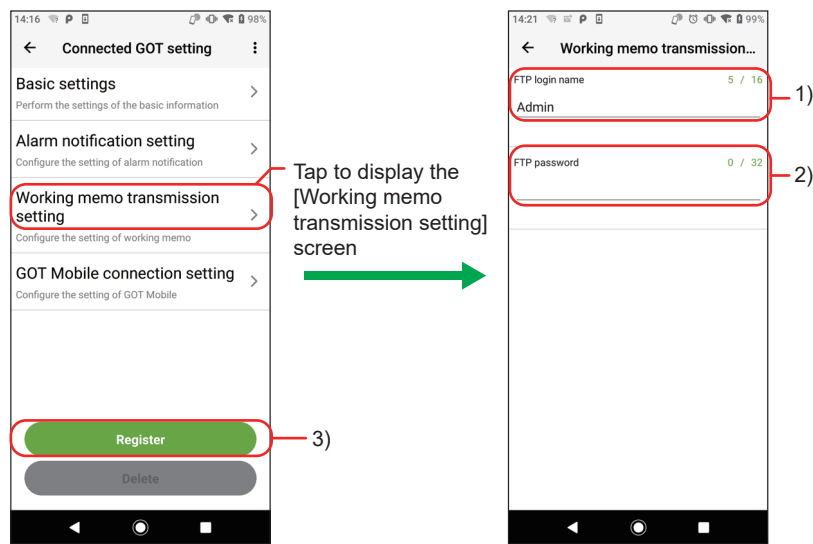
The target versions are as follows:

Software	Software version at the time of export	Software version at the time of import
Pocket GOT (Android version)	Version 1.1.0.0 or later	Version 1.0.0.3 or earlier
Pocket GOT (iOS and iPadOS versions)	Version 1.1.0 or later	Version 1.0.0 or earlier

# 4.5 Working Memo Transmission Setting

Configure the settings required to send working memos.

- 1. Tap [Working memo transmission setting] on the [Connected GOT setting] screen.
- 2. Set each item on the [Working memo transmission setting] screen.



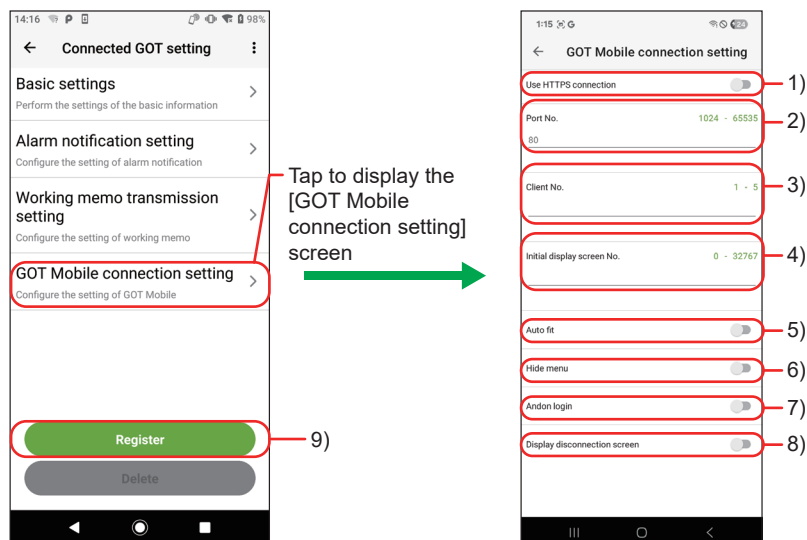
No.	Item	Description
1)	[FTP login name]	Enter the login name to log in to the FTP server (GOT).
2)	[FTP password]	Enter the password to log in to the FTP server (GOT).
3)	[Register]	Register the information set in the [Working memo transmission setting] screen.



## 4.6 GOT Mobile Connection Setting

Configure the settings required to display the mobile screen.

1. Tap [GOT Mobile connection setting] on the [Connected GOT setting] screen.
2. Set each item on the [GOT Mobile connection setting] screen.



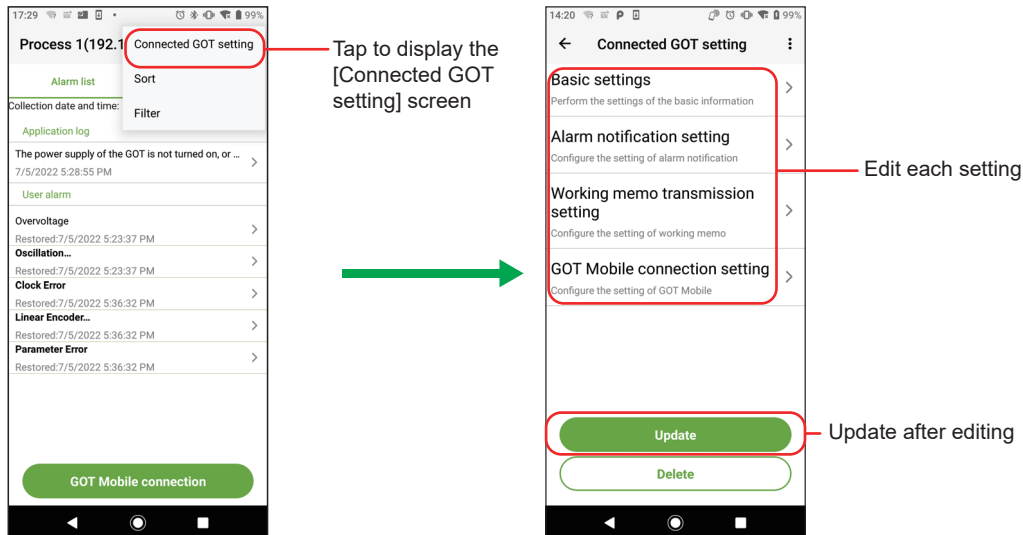
No.	Item	Description
1)	[Use HTTPS connection]	An HTTPS connection is used for alarm monitoring and GOT Mobile connection. This setting appears only when [GOT3000] is selected for [Series] on the [Basic settings] screen. When this setting is changed to on or off, the setting for [Use HTTPS connection] on the [Alarm notification setting] screen also changes.
2)	[Port No.]	Set the port number to communicate with the GOT. If left blank, the following will be displayed. • When [Use HTTPS connection] is enabled: 443 • When [Use HTTPS connection] is disabled, or [GOT series] is [GOT2000] on the [Basic settings] screen: 80
3)	[Client No.]	Set the client No. of the GOT Mobile function.
4)	[Initial display screen No.]	Set the number of the mobile screen to be displayed for the first time.
5)	[Auto fit]	Automatically adjusts the mobile screen display according to the screen size of the mobile terminal.
6)	[Hide menu]	Hides the menu when the mobile screen is displayed.
7)	[Andon login]	Displays the mobile screen as an ANDON display.
8)	[Display disconnection screen]	Displays the disconnection screen when the communication of the GOT Mobile function is disconnected.
9)	[Register]	Register the information set in the [GOT Mobile connection setting] screen.

## 4.7 Updating and Deleting the Connection Setting

Update or delete information of the GOT set on the [Connected GOT list] screen.

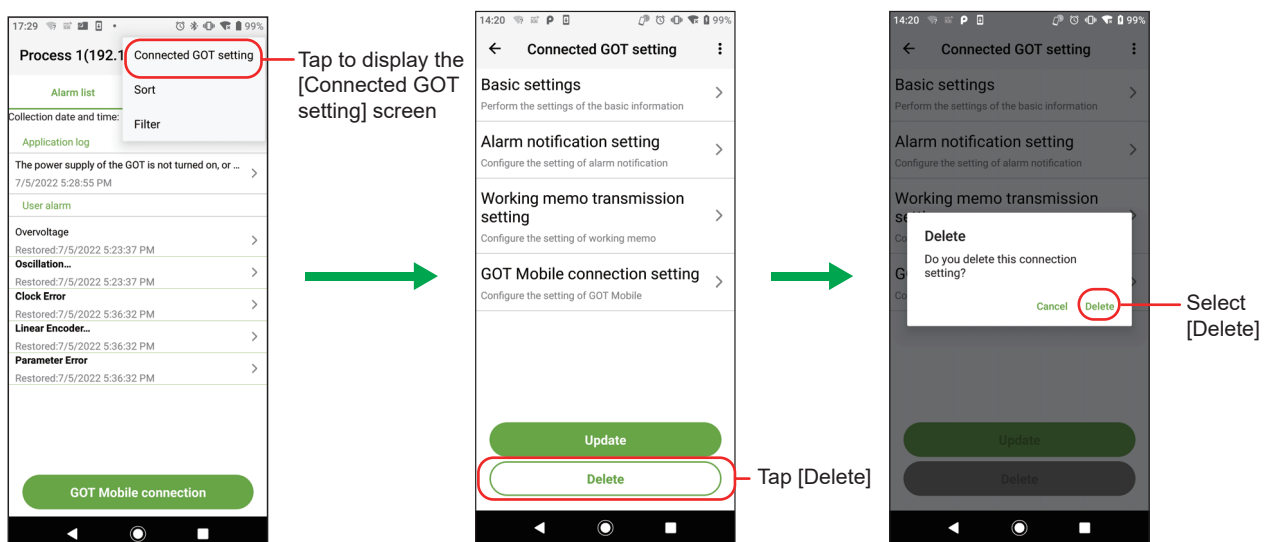
### Updating the information of the registered connection

1. Tap [Connected GOT setting] from the menu of [Alarm list] or [Working memo].
2. The [Connected GOT setting] screen is displayed. Edit each setting.
3. After the editing is complete, return to the [Connected GOT setting] screen and tap [Update].



### Deleting the registered connection

1. Tap [Connected GOT setting] from the menu of [Alarm list] or [Working memo].
2. The [Connected GOT setting] screen is displayed. Tap [Delete].
3. [Do you delete this connection setting?] is displayed. Select [Delete].



# 5 ALARM RECEPTION

## 5.1 Checking Received Alarms

Unread alarms can be checked with the number of GOTs with alarms and status icons on the [Connected GOT list] screen. When alarms are received while the application is hidden, the mobile terminal notification function displays the notifications from the connected GOTs individually on the lock screen or home screen.

If alarms are received from multiple connected GOTs, the notifications are displayed altogether. The display, however, may differ depending on the specifications of the mobile terminal.

Tapping an alarm notification causes transition to the [Connected GOT list] screen, whereas tapping the grouped notification does not cause transition.

When receiving an alarm, the app notifies the user of the alarm with sound and vibration of the mobile terminal.

The app may not notify the user of the alarm with sound and vibration if the notification setting is changed on the mobile terminal.

When the application is displayed with notifications displayed, the notifications are deleted.

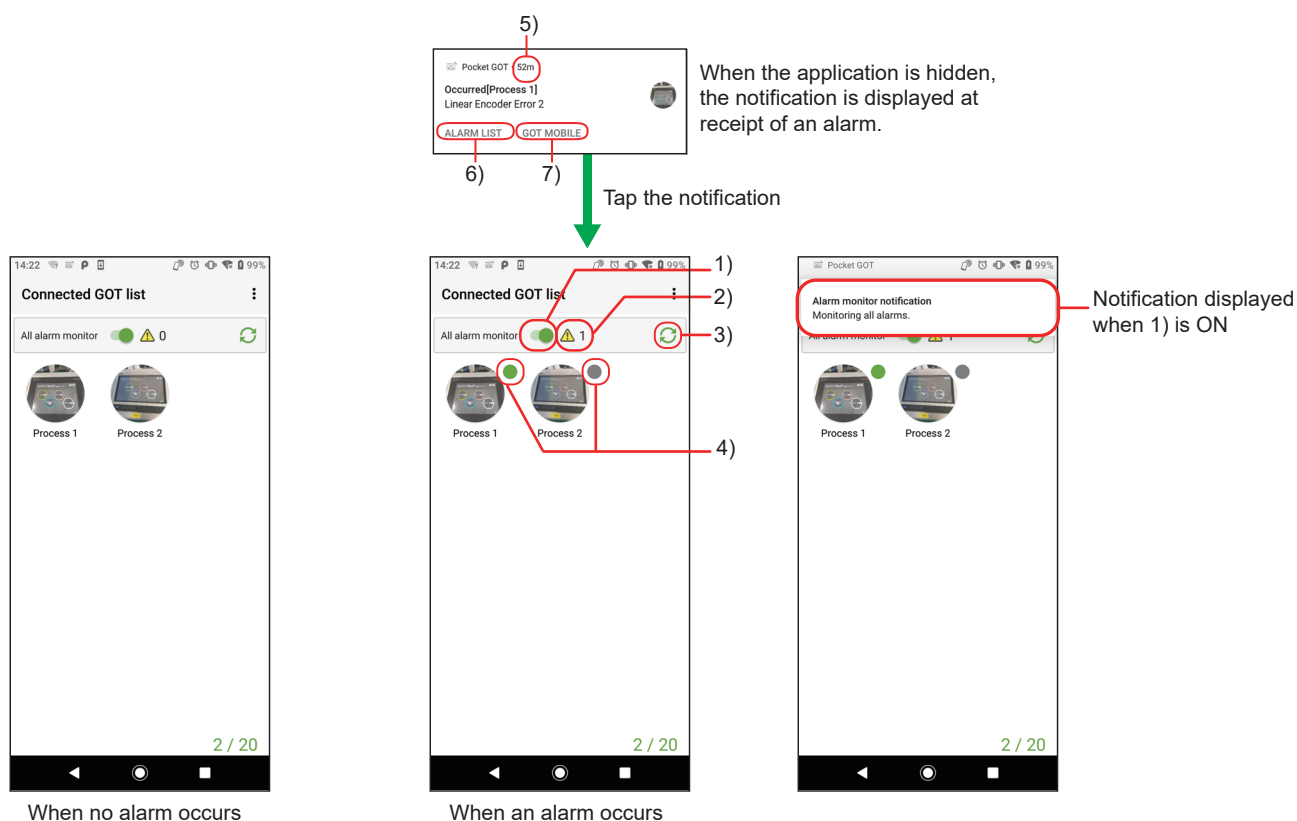
5

### Point



To receive alarm notifications, set the mobile terminal not to restrict the use of applications in the background. It can be set as follows in the case of the reference model (AQUOS Sense3 plus) used in this manual.

[Settings App] → [Apps & notifications] → [Pocket GOT] → [Advanced] → [Battery] → [Background restriction]

Android screens are used in the explanations that follow.



No.	Item	Description	Operating system
1)	All alarm monitor button	<p>In the ON state, communication is established with the GOT at the set monitoring cycle to acquire alarm information. During alarm monitoring, the [Monitoring all alarms.] notification is always displayed. If this is off, alarms are not monitored. When battery optimization is enabled for Pocket GOT on the mobile terminal with Android 12 or later, the battery control disabling request screen is displayed when the all alarm monitor button is set to the ON state. If battery optimization remains enabled, alarm monitoring is not performed.</p> <p>In the ON state, communication is established with the GOT at the set monitoring cycle to acquire alarm information. If this is off, alarms are not monitored. When the all alarm monitor button is turned on and Pocket GOT that is running in the background is displayed on the screen, alarms are monitored immediately and the alarm cycle is reset.</p>	<ul style="list-style-type: none"> <li>• Android</li> <li>• iOS</li> <li>• iPadOS</li> </ul>
2)	Number of GOTs with alarms	Displays the number of GOTs with unread alarms.	<ul style="list-style-type: none"> <li>• Android</li> <li>• iOS</li> <li>• iPadOS</li> </ul>
3)	Reload button	Tap this button to start communication with the GOT to be monitored for alarms and acquire information on the alarms that are currently occurring.	<ul style="list-style-type: none"> <li>• Android</li> <li>• iOS</li> <li>• iPadOS</li> </ul>
4)	Status icon	<p>A green icon is displayed when communication with the GOT is enabled and there are any unread alarms. A gray icon is displayed when communication with the GOT is disabled regardless of whether there is any unread alarm or not. No icon is displayed when communication with the GOT is enabled and either of the following cases applies.</p> <ul style="list-style-type: none"> <li>• There is no unread alarm.</li> <li>• Unread alarms have just been read.</li> </ul>	<ul style="list-style-type: none"> <li>• Android</li> <li>• iOS</li> <li>• iPadOS</li> </ul>
5)	Elapsed time	<p>Displays the elapsed time from the alarm occurrence, check, or reset. For an app log, the elapsed time from the app log occurrence is displayed. The elapsed time does not appear in the following cases.</p> <ul style="list-style-type: none"> <li>• When the alarm update date and time is earlier than the date and time of the mobile terminal</li> <li>• When the version of the GOT Mobile function of the system application (extended function) is earlier than 01.47.000 and the mobile terminal is in sleep mode</li> </ul> <p>Displays the time elapsed after a notification is received.</p>	<ul style="list-style-type: none"> <li>• Android</li> <li>• iOS</li> <li>• iPadOS</li> </ul>

No.	Item	Description	Operating system
6)	[Alarm list] button	<p>Tap this button to cause transition to [Alarm list] of the target GOT displayed on the notification display and delete the notification.</p> <p>The [Alarm list] button does not appear in the following cases.</p> <ul style="list-style-type: none"> <li>• When multiple notifications are displayed altogether</li> <li>• During sleep mode (The button appears when sleep mode is canceled.)</li> </ul> <p>The [Alarm list] button does not appear in the following cases.</p> <p> Page 38 Alarm list display</p>	• Android
7)	[GOT Mobile] button	<p>For details on [Alarm List], refer to the following.</p> <p>The [GOT Mobile] button does not appear in the following cases.</p> <ul style="list-style-type: none"> <li>• When multiple notifications are displayed altogether</li> <li>• During sleep mode (The button appears when sleep mode is canceled.)</li> </ul> <p>For details on the mobile screen, refer to the following.</p> <p> Page 55 DISPLAYING MOBILE SCREEN</p>	• Android

## Alarm notification conditions for each OS

The alarm monitoring conditions differ depending on the OS.

The following shows the alarm monitoring conditions for each OS.

Operating system	Conditions
Android	When all the following conditions are satisfied: <ul style="list-style-type: none"><li>• The application has started.</li><li>• The application is running in the background.</li><li>• All alarm monitoring is enabled.</li></ul>
iOS iPadOS	When all the conditions of condition 1 or condition 2 are satisfied: Condition 1 <ul style="list-style-type: none"><li>• The application has started.</li><li>• The application is running in the background.</li><li>• All alarm monitoring is enabled.</li><li>• The application is connected to the SSID that is set on the alarm notification setting screen.</li></ul> Condition 2 <ul style="list-style-type: none"><li>• The application has not started.</li><li>• Alarm monitoring was on when the application was last shut down.</li><li>• The application is connected to the SSID that is set on the alarm notification setting screen.</li></ul> To stop condition 2, restart the application and turn off all alarm monitoring.

## Alarm notification display

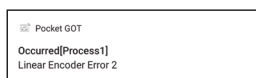
The following shows notification display examples.

### ■For Android

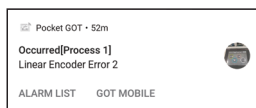
The alarm notification display differs depending on whether the mobile terminal screen is on or off.

When the mobile terminal screen is turned on, the alarm display changes to the display of when the screen is on.

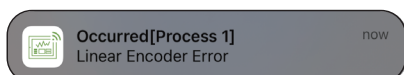
- Example of notification display when the screen is off (sleep mode)



- Example of notification display when the screen is on



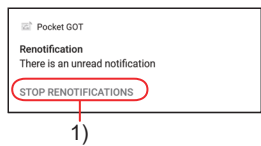
### ■For iOS and iPadOS



## Alarm re-notification (Android only)

The following items are re-notified if remaining on the lock screen or home screen of the mobile terminal.

- Alarm received notifications
- App logs



No.	Item	Description
1)	[Stop renotifications] button	Tap this button to stop re-notification until the app receives a new alarm received notification.

To enable alarm re-notification, configure the following settings.

- Set the all alarm monitor button to the ON state on the [Connected GOT list] screen.
- Set [Set as the monitor target] and [Renotify (all GOT settings)] to the ON state on the [Alarm notification setting] screen.

Tapping anywhere other than the [Stop renotifications] button for re-notification causes transition to the [Connected GOT list] screen.

When a new alarm is received, the following notifications are deleted.

- Re-notification
- Notification of re-notification stop

## 5.2 Checking Alarms of Each GOT

Android screens are used in the explanations that follow.

### Alarm list display

To display [Alarm list], tap the GOT whose alarms are to be checked on the [Connected GOT list] screen or tap the [Alarm list] button on the alarm received notification display.

The following items are displayed in [Alarm list].

- [Application log]

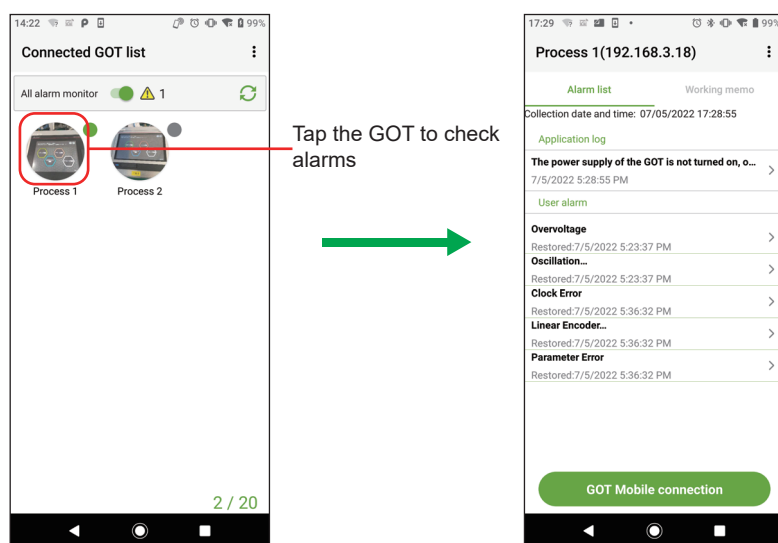
If no alarm can be acquired from the GOT, the cause is displayed.

- [User alarm]

The alarms acquired from the GOT are displayed.

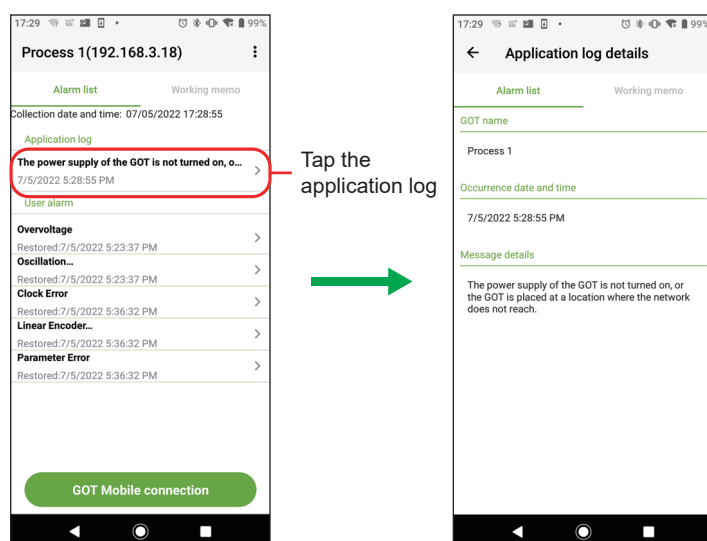
User alarms worth of up to 40 alarm IDs are displayed.

Up to five alarms can be displayed within one alarm ID.



### [Application log details] display

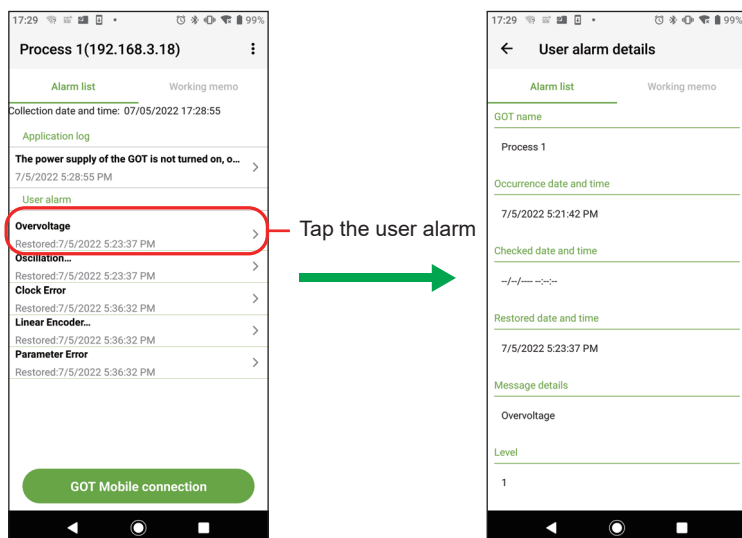
Tap the application log displayed on [Alarm list] to display [Application log details].





## [User alarm details] display

Tap the user alarm displayed on [Alarm list] to display [User alarm details].

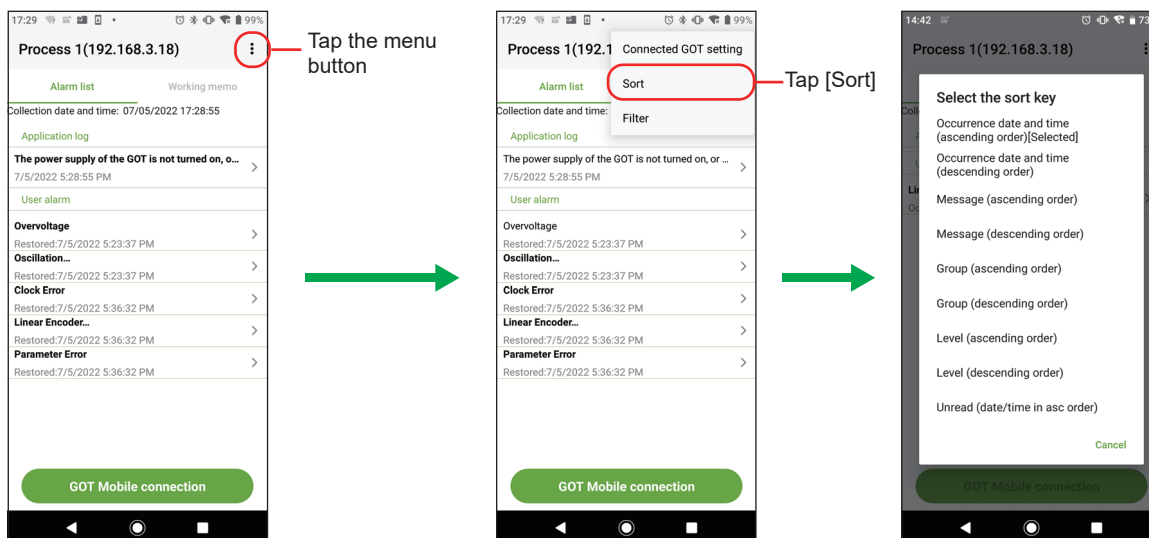


5

## Alarm sorting

Tap the menu button on [Alarm list] and tap [Sort] to display [Select the sort key].

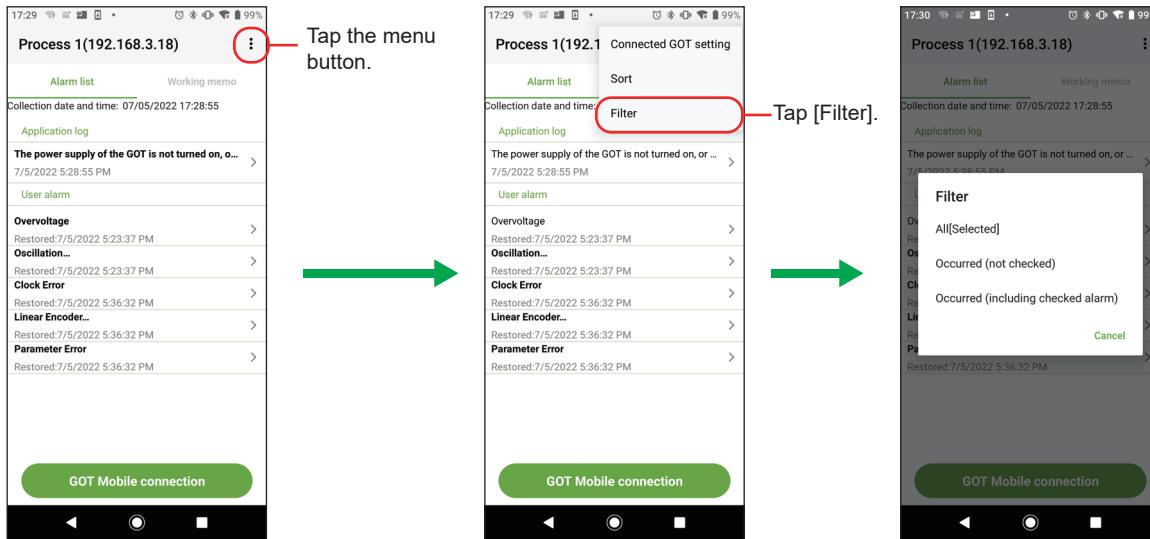
Select the key to sort the alarms.



## Alarm filtering

Tap the menu button on [Alarm list] and tap [Filter] to display [Filter].

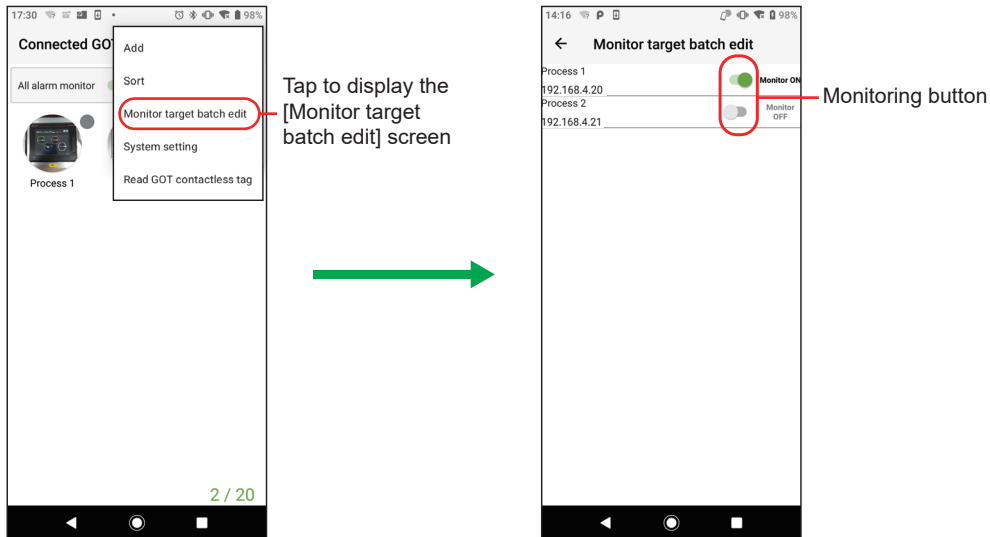
Select a filter to narrow down the alarms.



## 5.3 Changing the GOT to be Monitored

The following describes how to change the GOT to be monitored.

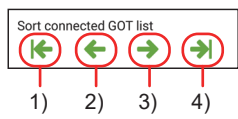
1. Tap [Monitor target batch edit] in the menu on the [Connected GOT list] screen to display the [Monitor target batch edit] screen.



2. Tap the monitoring button to change the GOT to be monitored.

# 5.4 Reordering the Icons in the Connected GOT List

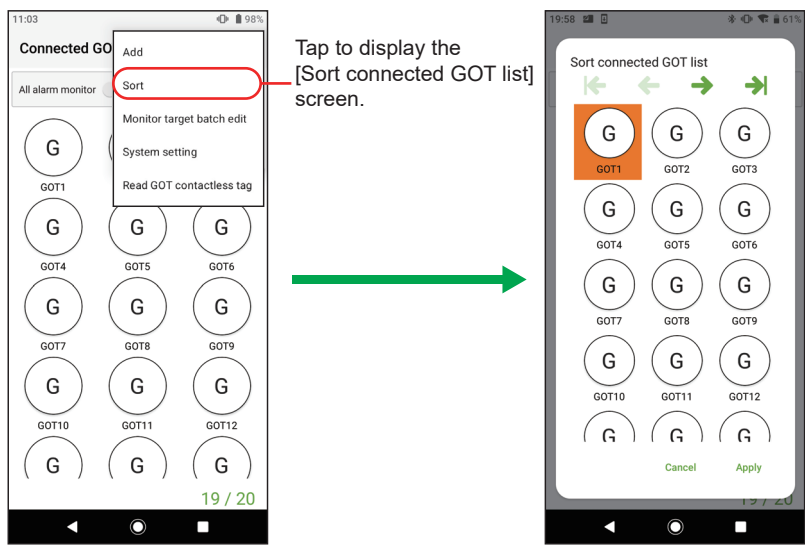
The icons on the [Connected GOT list] screen can be reordered with the move buttons. Four move buttons are provided as shown below.



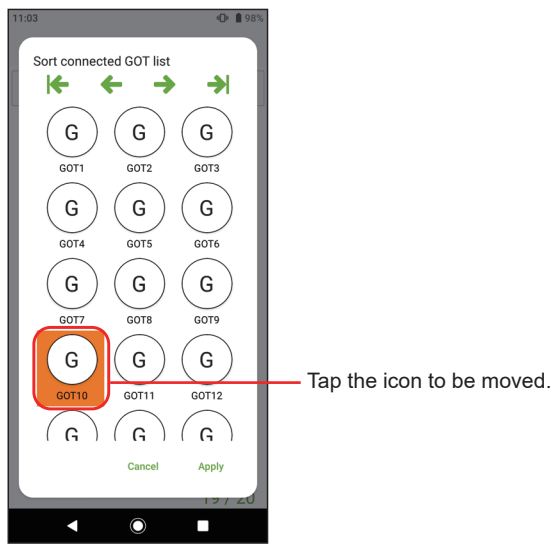
No.	Item	Description
1)	Move to the top button	Moves the icon to the top.
2)	Move forward button	Moves the icon one position forward.
3)	Move backward button	Moves the icon one position backward.
4)	Move to the end button	Moves the icon to the end.

The following shows how to reorder the icons on the [Connected GOT list] screen.

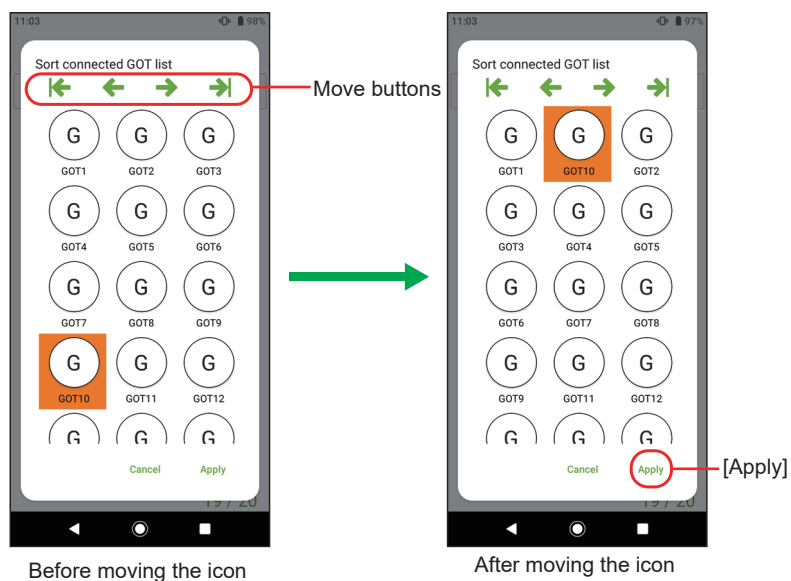
1. Tap [Sort] in the menu on the [Connected GOT list] screen to display the [Sort connected GOT list] screen.



2. Select an icon to be moved.



3. Tap any of the move buttons to move the icon to an intended position.



4. Tap [Apply] to close the [Sort connected GOT list] screen.

## 5.5 Receiving Notifications on a Smart Watch via the Mobile Terminal

Configure the settings so that the notifications displayed on the mobile terminal are notified to a smart watch. This enables the smart watch to receive alarm notifications via the mobile terminal.

The alarms received on the mobile terminal are also displayed on a smart watch.

When the buttons on the smart watch are operated, the corresponding behaviors occur on the mobile terminal.

For example, when the [Alarm list] button on the smart watch is pressed, the alarm list of Pocket GOT is displayed on the mobile terminal.

Note that the displayed contents and behaviors may differ depending on the smart watch.

For details on the alarm, check Pocket GOT on the mobile terminal.

When alarm re-notification settings are configured, re-notifications are displayed also on a smart watch.

Alarm re-notification is only available for Android.

For details on alarm re-notification, refer to the following.

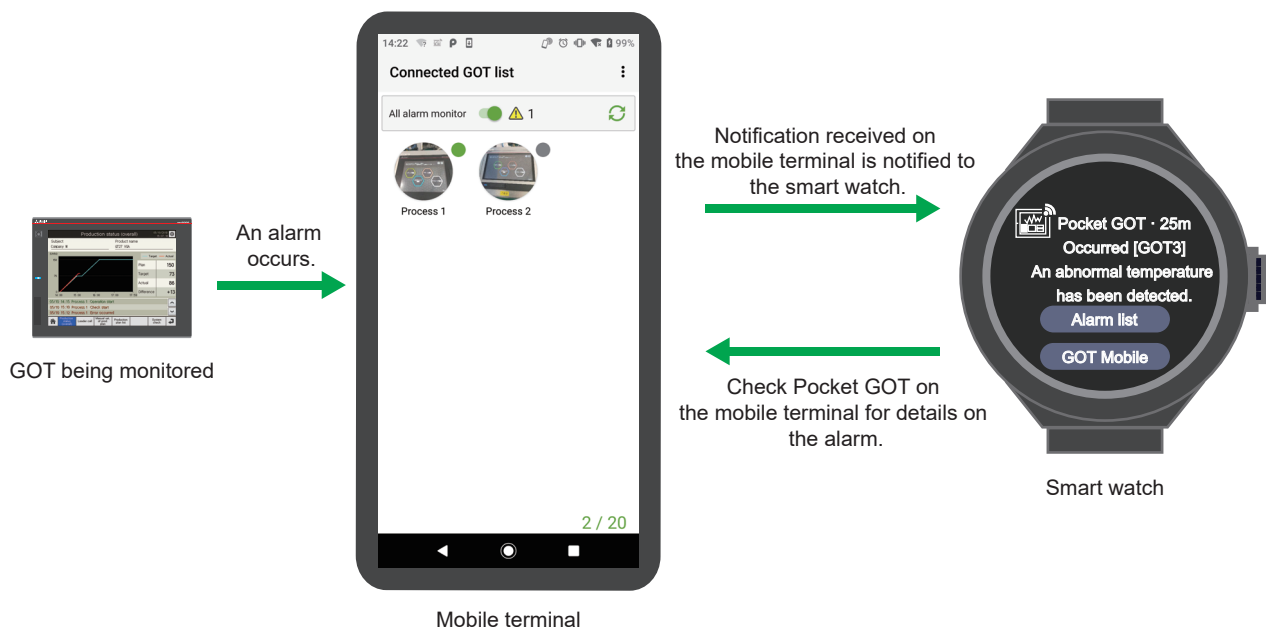
📖 Page 37 Alarm re-notification (Android only)

### Point

For how to configure the settings to notify the notifications displayed on the mobile terminal to a smart watch, refer to the manual of the mobile terminal or the smart watch to be used.

Settings are not required for Pocket GOT.

Direct interaction between the smart watch and GOT is not available.



### Precautions

When switching the screen of the mobile terminal via a smart watch, pressing the button on the smart watch does not execute the action if the screen of the mobile terminal is off.

## 5.6 Precautions

### When a communication error has occurred with 20 mobile terminals connected

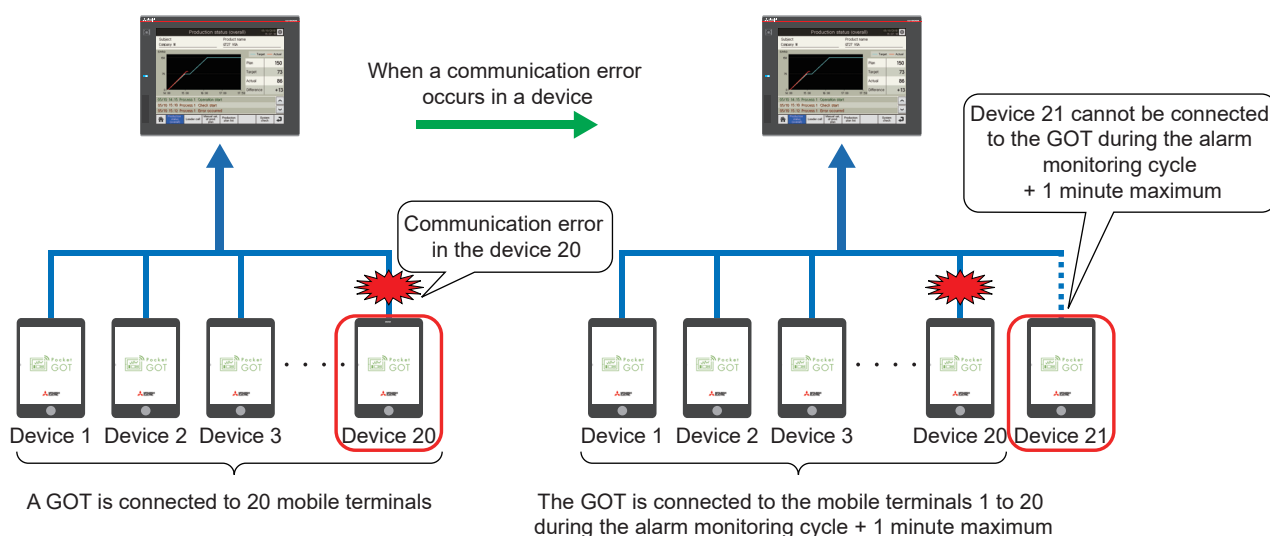
Up to 20 mobile terminals can be connected to one GOT simultaneously.

When a mobile terminal has a communication error, the GOT remains in the connected state during the alarm monitoring cycle + 1 minute maximum.

Therefore, when a communication error occurs in one of the 20 mobile terminals that are connected to one GOT, no additional mobile terminal can be connected during the alarm monitoring cycle + 1 minute maximum.

The following shows an example.

(Example)



5

### Alarm monitoring while the mobile terminal is in sleep mode

#### ■For Android

The application operates in the background during alarm monitoring.

The operations of this application are restricted during sleep mode by the power saving setting of the mobile terminal and alarms cannot be monitored in the specified alarm cycle of Pocket GOT.

If there are no alarm notifications during sleep mode, set the mobile terminal not to restrict the use of applications in the background.

#### ■For iOS and iPadOS

While this application is running (including during sleep), the operation of other applications is restricted, and alarms may not be monitored according to the specified alarm cycle of Pocket GOT.

### Precautions for collection cycle

Depending on the number of GOTs to be monitored for alarms and performance of the mobile terminal on which the application runs, such as a CPU score, number of threads, and memory size, collection may not be possible as specified in the collection cycle setting.

### Precautions for connection to GT SoftGOT3000 or GT SoftGOT2000

Up to 20 mobile terminals can be simultaneously connected to one personal computer running GT SoftGOT3000 or GT SoftGOT2000.

When Pocket GOT and the GOT Mobile function are used, up to 20 mobile terminals can be simultaneously connected to one personal computer running GT SoftGOT3000 or GT SoftGOT2000.

Example: When 15 GOT Mobile clients are connected, up to 5 Pocket GOT modules can be connected.

## Number of alarms that can be received from one alarm ID

Up to five alarms can be received from one alarm ID.

If there are more than five alarms, the one with the most recent occurrence date and time is received.

If there are alarms with the same occurrence date and time, the one with the smallest monitored alarm number is received.

The alarms older than the most recent five alarms are not displayed in the alarm list. To check all the alarms, do so using the GOT Mobile function of Pocket GOT.

## Behavior of the mobile terminal when waking from sleep mode (Android only)

The Pocket GOT's alarm cycle is reset when the mobile terminal screen is turned on.

Only occurrences are notified while the mobile terminal is in sleep mode.

The contents of notification upon turning on of the screen depend on the statuses of the alarms after their occurrences are notified during sleep mode.

- If an alarm status remains unchanged after occurrence: The notification received during sleep mode is notified again.
- If an alarm statuses is changed after occurrence: Checked or reset is notified.
- If multiple alarms are occurring: The notifications are provided according to the notification priority setting.

For the notification priority setting, refer to the following.

☞ Page 28 Registration of Alarm Notification Setting

For notification receive examples, refer to the following.

☞ Page 46 Alarms to be notified (Android only)

## Alarms to be notified (Android only)

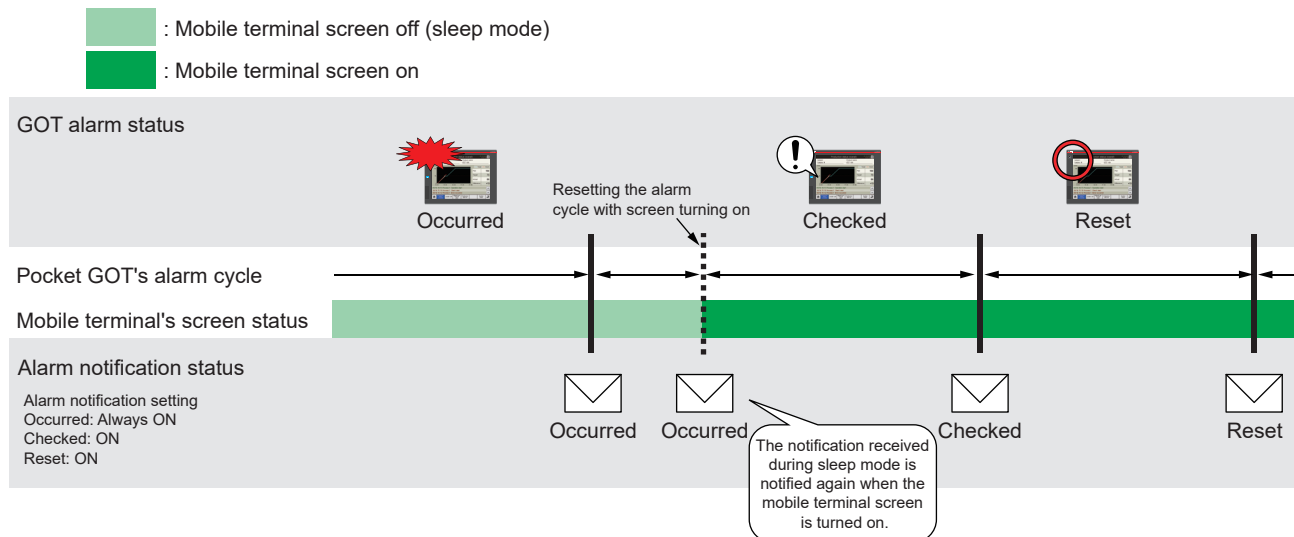
High-priority notifications are displayed one by one per connected GOT.

Only the alarms whose statuses are Occurred in the GOT are notified while the mobile terminal is in sleep mode.

The following shows notification receive examples when the mobile terminal screen is off (sleep mode) and on.

Example 1) While the mobile terminal is in sleep mode, the following occurs within one alarm cycle of Pocket GOT.

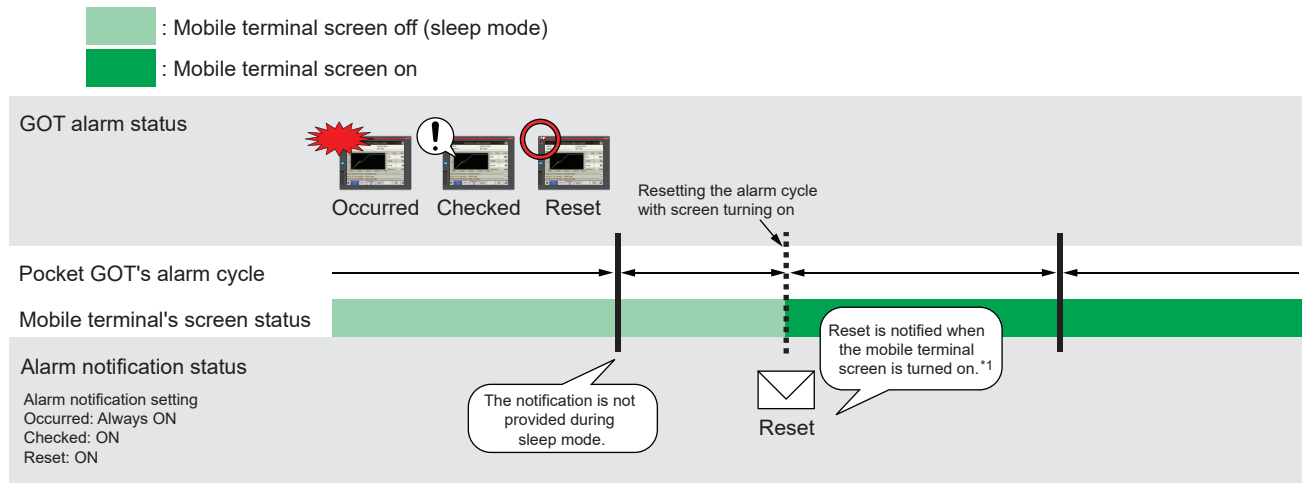
- Occurrence only





Example 2) While the mobile terminal is in sleep mode, the following occurs within one alarm cycle of Pocket GOT.

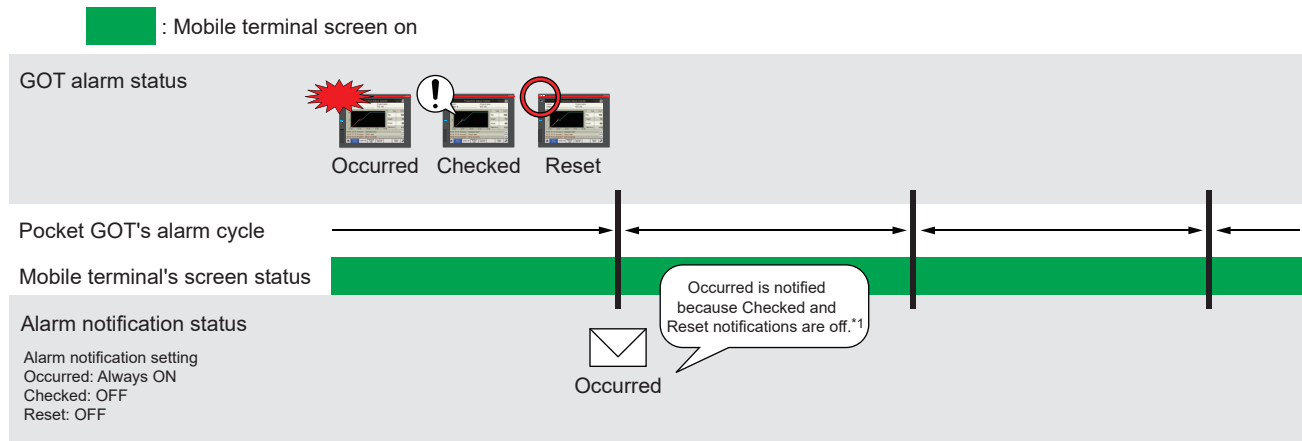
- Occurred, checked, and reset in one alarm event (Alarm notification setting for Checked and that for Reset are on.)



\*1 If one alarm occurs and is checked within one alarm cycle of Pocket GOT, Checked is notified when the screen is turned on.

Example 3) When the mobile terminal screen is on, the following occurs within one alarm cycle of Pocket GOT.

- Occurred, checked, and reset in one alarm event (Alarm notification setting for Checked and that for Reset are off.)



\*1 If one alarm occurs and is checked within one alarm cycle of Pocket GOT, Occurred is notified when the alarm notification setting for check is off.

## Alarms to be notified while the mobile terminal is in sleep mode

The notification display differs depending on the version of the GOT Mobile function in the system applications (extended functions) of the GOT.

Example of notification display during sleep mode	GOT Mobile function version of the system application (extended function)
<p>[There is new information] is displayed.</p>	Earlier than 01.45.000 (Earlier than GT Designer3 Version 1.275M)
<p>The message set in the user alarm settings is displayed.</p>	01.45.000 or later (GT Designer3 Version 1.275M or later)

# MEMO

---

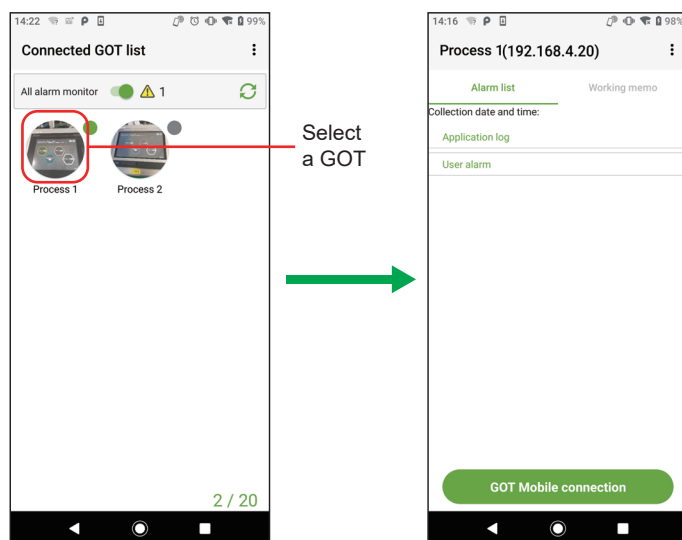
# 6 SENDING WORKING MEMO

Android screens are used in the explanations that follow.

## 6.1 Working Memo Screen Display

The following describes how to display the working memo screen.

1. Select the connected GOT on the [Connected GOT list] screen to display [Alarm list].

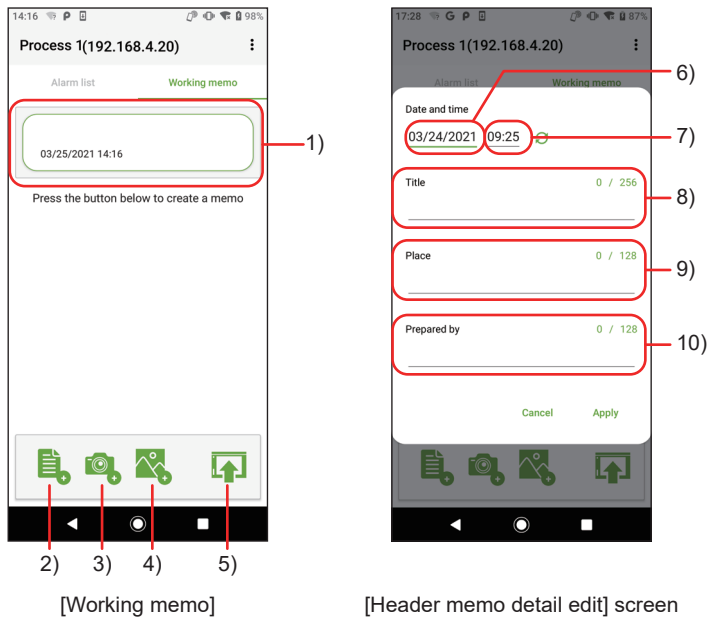


2. Tap the [Working memo] tab and create a working memo.



## 6.2 Functions of Working Memo

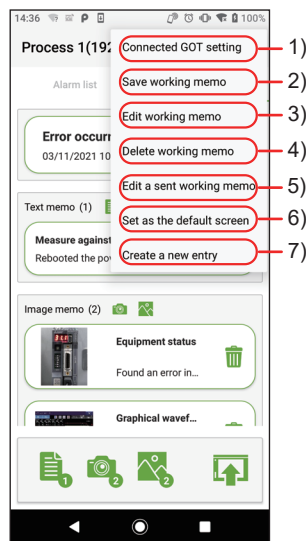
The following describes the functions of the working memo.



No.	Item	Description
1)	Header memo	Displays the [Header memo detail edit] screen for entering the header of the working memo when tapped.
2)	New text memo	Displays the text memo detail edit screen, and registers the created text memo. Up to 15 text memos can be registered.
3)	Camera shooting	Displays the camera shooting screen and registers the captured image as an image memo. Up to 3 images can be registered in combination with image selection.
4)	Image selection	Displays the image selection screen, and registers the selected image as an image memo. Up to 3 images can be registered in combination with camera shooting. The available file extensions differ depending on the OS used. <ul style="list-style-type: none"> <li>• For Android: bmp, png, jpg (jpeg)</li> <li>• For iOS and iPadOS: png, jpg (jpeg), gif, tiff, HEIC</li> </ul> For iOS, the following image files cannot be registered. <ul style="list-style-type: none"> <li>• Files whose vertical or horizontal image size is larger than 10000 pixels</li> <li>• Files larger than 50 MB</li> </ul>
5)	Send working memo	Sends the created working memo and saves it to the SD card inserted in the GOT.
6)	Date	Set the date to be displayed in the header memo.
7)	Time	Set the time to be displayed in the header memo.
8)	[Title]	Enter the title to be displayed in the header memo.
9)	[Place]	Enter the place to be displayed in the header memo.
10)	[Prepared by]	Enter the person who filled out the memo to be displayed in the header memo.

# 6.3 Menu for Working Memo

The following shows the menu of the working memo.




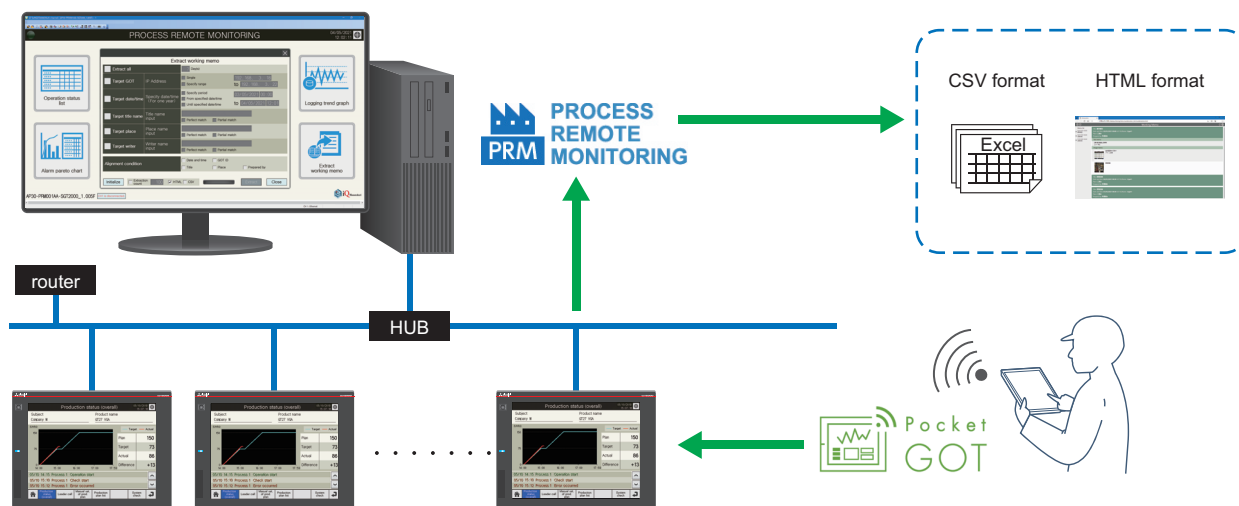
No.	Item	Description
1)	[Connected GOT setting]	Displays the [Connected GOT setting] screen.
2)	[Save working memo]	Saves the working memo being edited to the mobile terminal.
3)	[Edit working memo]	Opens the list of saved working memos. Select the one to display and edit.
4)	[Delete working memo]	Opens the list of saved working memos. Select the one to delete.
5)	[Edit a sent working memo]	Opens the list of working memos saved in the SD card inserted in the GOT. Select the one to display and edit.
6)	[Set as the default screen]	Sets the screen currently displayed as the default screen to be displayed when the [Working memo] tab is opened.
7)	[Create a new entry]	Deletes the current edition and displays a new working memo.

## 6.4 Interacting with Process Remote Monitoring

The equipment status on the GOT recorded in the working memo is collected by iQ Monozukuri Process Remote Monitoring, and can be checked at once on the personal computer.

For details on Process Remote Monitoring, refer to the following.

 Instruction manual for iQ Monozukuri Process Remote Monitoring



## 6.5 Precautions

---

During the sending or receiving of a working memo file between the GOT and the mobile application, if the conditions stated below occur, communication may be disconnected, leaving the file in an invalid state on the GOT.

- The network between the GOT and the mobile application is disconnected.
- The GOT is turned off.
- The GOT enters offline mode.
- The mobile terminal enters sleep mode. (iOS and iPadOS).
- The application is running in the background. (iOS and iPadOS)

Ensure that the above conditions will not occur during the sending or receiving of a working memo.

# MEMO

---



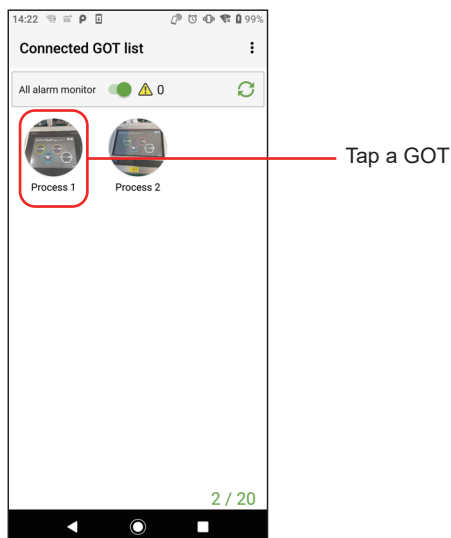
# 7 DISPLAYING MOBILE SCREEN

The GOT Mobile function is used to monitor controllers from information devices such as tablets through the GOT. Android screens are used in the explanations that follow.

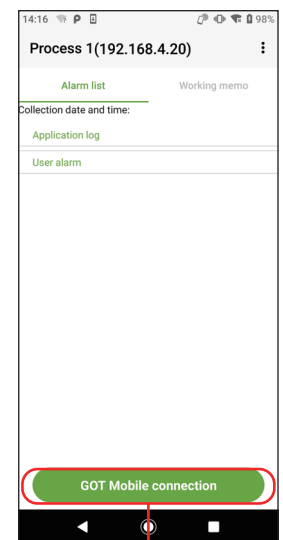
## 7.1 How to Display Mobile Screen

The following describes how to display the mobile screen.

1. Tap the GOT to be checked on the [Connected GOT list] to display the [Alarm list].

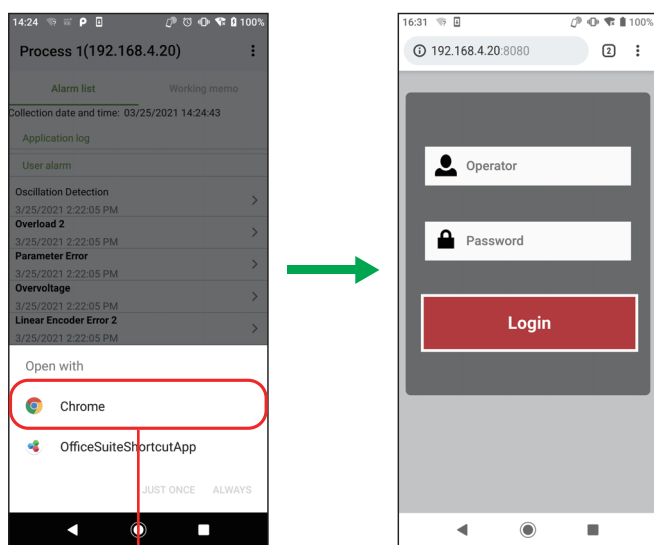


2. Tap [GOT Mobile connection] in [Alarm list].



Tap [GOT Mobile connection]

- 3.** When the default browser has been set, the connection authentication screen is displayed.  
When the default browser has not been set, the connection authentication screen is displayed when the browser is selected.  
Select Google Chrome as the browser.



Select the browser to be displayed  
(Only when the default browser is not set)

Connection authentication screen

- 4.** After logging into the browser, the mobile screen is displayed.



Display the mobile screen

# 8 PERFORMING THE OPERATION CONFIGURED FOR THE CONTACTLESS TAG

When you hold the mobile terminal over the GOT's contactless tag, you can perform the operation configured for the tag.

To read the operation settings from the contactless tag, the mobile terminal's NFC function must be enabled.

Configure the operation settings to be read from the contactless tag in GT Designer3.

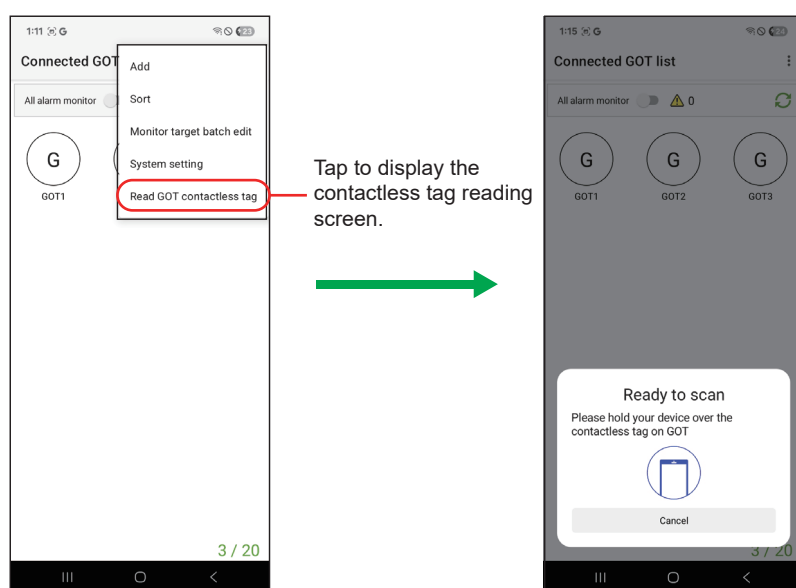
📖 GT Designer3 (GOT3000) Screen Design Manual

Android screens are used in the explanations that follow.

## 8.1 Procedure for Reading the Operating Settings

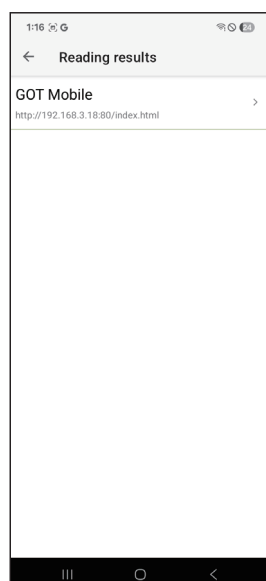
The following shows the procedure for reading the operation settings from the contactless tag.

1. Tap [Read GOT contactless tag] in the menu on the [Connected GOT list] screen to display the contactless tag reading screen.



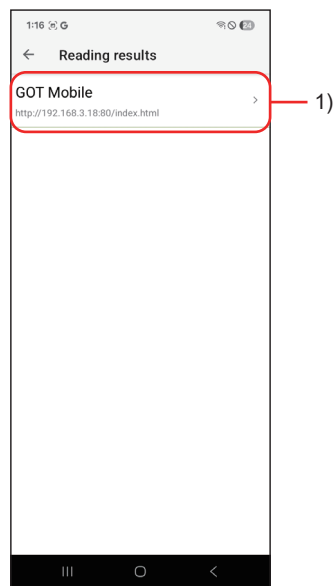
2. Hold the mobile terminal over the GOT's contactless tag to display the [Reading results] screen.

📖 Page 58 [Reading results] Screen



# 8.2 [Reading results] Screen

Tap the item displayed on the [Reading result] screen to perform the configured operation.



No.	Item		Description
1)	Operation settings	—	Displays the operation setting configured for the contactless tag. Only one of the following operation settings can be displayed.
		[GOT Mobile]	This is the URL of the GOT accessed by the GOT Mobile function. Tap to launch a browser and display the connection authentication screen.
		[Phone number]	Tap to launch the phone app and display the screen to call the configured number.
		[URL]	Tap to launch a browser and access the configured URL.
		[SMS]	Tap to launch the SMS app and display the configured recipient and message.
		[e-mail]	Tap to launch the mail app and display the configured recipient, subject, and body text.
		[Text]	Displays one line of the configured text. Tap to display the [Details] screen. You can display or copy all the configured text.

# 9 TROUBLESHOOTING

For the troubleshooting for Pocket GOT, refer to the following.

Symptom		Cause	Corrective action	Operating system
The communication between Pocket GOT and GOT timed out, although it had been possible until now.		The communication between Pocket GOT and GOT has been interrupted.	Check the connection status with the GOT. <ul style="list-style-type: none"> <li>• The power is ON.</li> <li>• The GOT is not offline.</li> <li>• There is no problem with the connection between the access point and GOT.</li> </ul> Check the connection status of the mobile terminal. <ul style="list-style-type: none"> <li>• The Wi-Fi connection status is stable.</li> </ul>	<ul style="list-style-type: none"> <li>• Android</li> <li>• iOS</li> <li>• iPadOS</li> </ul>
Pocket GOT cannot communicate with the GOT.	Common	The mobile terminal and GOT are not connected to the same network. (For example, the mobile terminal is not connected to Wi-Fi.)	Connect the GOT and mobile terminal to the same network such as Wi-Fi.	<ul style="list-style-type: none"> <li>• Android</li> <li>• iOS</li> <li>• iPadOS</li> </ul>
		The IP address is different.	Check the IP address of Pocket GOT and GOT. Set an IP address that can be communicated with.	
	Factor on the GOT side	The FTP server setting on the GOT side is not configured. Or, the setting is not correct.	Check the FTP server setting on the GOT side.	<ul style="list-style-type: none"> <li>• Android</li> <li>• iOS</li> <li>• iPadOS</li> </ul>
	Factor on the mobile terminal side	The information of the GOT registered in Pocket GOT is not correct.	Check that the GOT information is registered correctly in the connected GOT setting of Pocket GOT.	<ul style="list-style-type: none"> <li>• Android</li> <li>• iOS</li> <li>• iPadOS</li> </ul>
		The FTP server setting of Pocket GOT is not configured. Or, the setting is not correct.	Check that the FTP setting of Pocket GOT is the same as the FTP setting of the GOT.	
		The Wi-Fi setting on the mobile terminal is not correct although a wireless LAN communication unit is used on the GOT side.	<ul style="list-style-type: none"> <li>• Disable DHCP in the Wi-Fi setting on the mobile terminal side and set the static IP address.</li> <li>• Match the static IP address on the mobile terminal side to the static IP address of the wireless LAN IP address on the GOT side.</li> </ul>	
		Pocket GOT is not allowed to access the local network.	Allow Pocket GOT to access the local network from the mobile terminal settings.	
	Additional condition Two or more mobile terminals cannot be connected to GT27, GT25, and GS25.	The FTP server (GOT) is being accessed from multiple mobile terminals simultaneously.	Enable multiple access on the GOT side. The number of simultaneously connectable devices can be increased up to four devices using GS404. (GT27, GT25, and GS25)	<ul style="list-style-type: none"> <li>• Android</li> <li>• iOS</li> <li>• iPadOS</li> </ul>
When an import or export is performed, the directory of the connected GOT information cannot be set in the system setting.		The directory path including the file name (with an extension) is longer than 247 characters.	<ul style="list-style-type: none"> <li>• Select a folder with a short directory path.</li> <li>• Edit the directory path to make it shorter.</li> </ul>	<ul style="list-style-type: none"> <li>• Android</li> <li>• iOS</li> <li>• iPadOS</li> </ul>

Symptom	Cause	Corrective action	Operating system
Alarm monitoring delays or no notification is provided while the mobile terminal is in sleep mode.	Pocket GOT operates in the background during alarm monitoring. Due to the setting of the mobile terminal, application operations or wireless LAN may be restricted while the mobile terminal is in sleep mode, and operation cannot be performed according to the specified collection cycle.	Check the settings of the mobile terminal. <ul style="list-style-type: none"> <li>• Clear the setting related to power saving.</li> <li>• Configure the setting to allow background operation of Pocket GOT even during sleep mode.</li> <li>• Configure the setting to maintain the wireless LAN connection even during sleep mode.</li> <li>• Turn off the Bluetooth® scanning for location information.</li> <li>• Change the communication settings for mobile data used in the background.</li> <li>• Disable battery optimization for Pocket GOT.</li> </ul>	• Android
	Notifications for this application are not allowed.	Check the settings of the mobile terminal, and allow notifications for Pocket GOT.	
	The trial period of the GOT Mobile function has expired.	Check the GOT Mobile function license is installed on the GOT to be monitored.	
	Pocket GOT was shut down when another application was operated.	Restart Pocket GOT and start monitoring.	
	When the battery capacity is low, Android enters power saving mode.	Check the settings of the mobile terminal, and turn off power saving mode.	
Alarm monitoring delays or no notification is provided while the application is running in the background.	Depending on the settings of the mobile terminal, the operation of the mobile terminal's applications may be restricted, disabling collection according to the specified cycle.	Check the settings of the mobile terminal, and clear the power saving settings.	• iOS • iPadOS
	You are attempting to monitor a GOT that cannot be connected.	Remove the GOT that cannot be connected.	
	The router setting is missing or incorrectly configured in the Wi-Fi connection settings of the terminal.	Check the Wi-Fi connection settings of the terminal.	
	Notifications for this application are not allowed.	Check the settings of the mobile terminal, and allow notifications for Pocket GOT.	
	The trial period of the GOT Mobile function has expired.	Check the GOT Mobile function license is installed on the GOT to be monitored.	
	Pocket GOT was shut down when another application was operated.	Restart Pocket GOT and start monitoring.	
Notifications cannot be received on a smart watch.	Pairing between the mobile terminal and smart watch is not established.	Check the pairing between the mobile terminal and smart watch. Establish pairing if it is not established.	• Android
	Notification setting is not configured for the smart watch.	Check the notification setting of the mobile terminal and that of the smart watch.	
	Notification is not available depending on mobile terminal and smart watch combinations.	Check if notification is available for the mobile terminal and smart watch combination.	
	Pairing is canceled when the mobile terminal enters sleep mode.	Check the settings of the mobile terminal. <ul style="list-style-type: none"> <li>• Clear the setting related to power saving.</li> <li>• Turn off the Bluetooth scanning for location information.</li> </ul>	
The import destination or export destination set in the application with version 1.0.0.0 is not displayed.	The application is compatible with Android 11. Specification of an import destination or export destination is abolished in the application with version 1.0.0.1 or later.	Tap twice [Application version] in the [System setting] screen to display the import destination or export destination set in the application with version 1.0.0.0.	• Android
Import or export operation does not work.	For import and export operations, an Android file manager app is used. Some file manager apps may not operate properly. Example: When performing an import or export after deleting a folder or file selected in the file manager app	<ul style="list-style-type: none"> <li>• Update the file manager app version.</li> <li>• User a different file manager app.</li> <li>• Do not delete a folder or file selected in the file manager app before import or export operation.</li> </ul>	• Android
If the connected SSID is acquired in the alarm notification settings, the privilege acquisition error is displayed.	Use the location information service to acquire the connected SSID.	<ul style="list-style-type: none"> <li>• Check the settings of the mobile terminal, and enable the location information service.</li> <li>• Allow the use of Pocket GOT's location information.</li> </ul>	• iOS • iPadOS
Tapping an item that requires an external app does not launch the corresponding app.	The corresponding app cannot be launched because it is uninstalled or disabled.	<ul style="list-style-type: none"> <li>• Install the corresponding app.</li> <li>• Enable the corresponding app.</li> </ul>	• Android • iOS • iPadOS

Symptom	Cause	Corrective action	Operating system
Even if the preferred language of the mobile terminal is changed, the alarm notification language does not change.	Background functions on the mobile terminal may not reflect changes to its preferred language.	Restart the mobile terminal.	<ul style="list-style-type: none"><li>• iOS</li><li>• iPadOS</li></ul>

# MEMO

---



# 10 RESTRICTIONS

The following shows the restrictions for Pocket GOT.

No.	Item	Description	Operating system
1	Storage of the mobile terminal	If there is not enough free space for storage, this mobile application may not operate properly. If free space is insufficient, an insufficient free space error dialog appears during a setting change or other actions, and the new setting is not saved. When the error occurs, the alarm monitoring ends. Free up some space and restart the mobile application.	• Android • iOS • iPadOS
2	Memory of the mobile terminal	If there is not enough memory for operation, this mobile application may not operate properly. Shut down other mobile applications that are running at the same time to free up memory before using this mobile application.	
3	Font size setting of the mobile terminal	When the font size is set to other than the default, the text layout may be broken or the displayed text may be cut off.	
4	Continuous tapping of the button	When a button (such as the [Back] button) is tapped quickly in succession, the screen may return multiple times. In this case, data may not be saved or other malfunctions may occur.	
5	Operation while the activity indicator is displayed	If the screen is transitioned during processing of this mobile application, the processing may be interrupted. If the processing is interrupted, some buttons cannot be pressed. In this case, restart this mobile application.	
6	Resolution	If the resolution of the mobile terminal to be used is low, the screen may not be displayed properly.	
7	Mobile application privileges	Some functions cannot be used for this mobile application unless access to the camera and storage and other privileges are enabled. When you enable a privilege while using this mobile application, restart the application. When this mobile application is restarted while it is being used, the interrupted contents may not be saved.	
8	Sleep mode of the mobile terminal screen	When the mobile terminal screen is in the sleep mode, it may restrict the operation of this mobile application. After waking from sleep mode, this mobile application may not be able to send alarm notifications according to the specified cycle due to restrictions.	
9	Battery consumption of the mobile terminal	Alarm monitoring runs in Pocket GOT's alarm cycles even while the mobile terminal is in sleep mode. Setting a short alarm cycle may affect the battery consumption.	• Android • iOS • iPadOS
		If the application is shut down with all alarm monitoring turned on, alarm monitoring continues in the background even if the application is not running. This may affect battery consumption.	• iOS • iPadOS
10	Starting multiple mobile applications	If multiple mobile applications are started, the OS may automatically shut them down. After operating an application other than this mobile application, check that this mobile application is running.	• Android • iOS • iPadOS
11	Smart watch notification	Notifications may not be available depending on the combination of mobile terminal and smart watch.	
12	Notification setting	Android 8 or later allows change of the notification setting (enabling/disabling notification, vibration, or other settings) on the setting screen of the mobile terminal. Android settings are prioritized and the settings cannot be controlled from the app; therefore, the behavior is unsupported.	• Android
13	OS-specific screen	When an image file is selected in this mobile application, an OS-specific screen may be displayed. In this case, tapping anywhere outside the screen or tapping the back button on the navigation bar may result in unintended behavior.	• Android • iOS • iPadOS
14	Battery optimization	If the battery optimization setting is changed during all alarm monitoring, the monitoring may not be performed according to the cycle.	• Android
15	Stopping all alarm monitoring on Android 13	During all alarm monitoring, pressing the stop button from the list of running applications will force the application to shut down.	• Android
16	Changing the setting of the mobile application privileges	If a privilege of this mobile application is changed in [Settings App] of iOS or iPadOS while the application is running, the application may restart.	• iOS • iPadOS
17	iCloud backup	The data registered with this mobile application is subject to iCloud backup. To exclude the data from being backed up, check the settings of the mobile terminal and disable the backup.	• iOS • iPadOS

No.	Item	Description	Operating system
18	Long-term continuous operation	Operating Pocket GOT continuously for a long period may result in instability. Periodic restarts are recommended for Pocket GOT.	<ul style="list-style-type: none"> <li>• Android</li> <li>• iOS</li> <li>• iPadOS</li> </ul>
19	Upside-down rotation of the mobile terminal screen	Even if the mobile terminal is rotated upside down, the screen display may not rotate.	<ul style="list-style-type: none"> <li>• iOS</li> </ul>
20	File size calculation	The file size displayed in this mobile application may differ from the file size displayed in iOS.	
21	Registerable image file size	If the image file to be registered in this mobile application is too large, the file may not be registered.	

# 11 OPEN SOURCE SOFTWARE

---

## 11.1 Acr.UserDialogs

---

The MIT License (MIT) Copyright (c) 2016 Allan Ritchie

Permission is hereby granted, free of charge, to any person obtaining a copy of this software and associated documentation files (the "Software"), to deal in the Software without restriction, including without limitation the rights to use, copy, modify, merge, publish, distribute, sublicense, and/or sell copies of the Software, and to permit persons to whom the Software is furnished to do so, subject to the following conditions:

The above copyright notice and this permission notice shall be included in all copies or substantial portions of the Software.

THE SOFTWARE IS PROVIDED "AS IS", WITHOUT WARRANTY OF ANY KIND, EXPRESS OR IMPLIED, INCLUDING BUT NOT LIMITED TO THE WARRANTIES OF MERCHANTABILITY, FITNESS FOR A PARTICULAR PURPOSE AND NONINFRINGEMENT. IN NO EVENT SHALL THE AUTHORS OR COPYRIGHT HOLDERS BE LIABLE FOR ANY CLAIM, DAMAGES OR OTHER LIABILITY, WHETHER IN AN ACTION OF CONTRACT, TORT OR OTHERWISE, ARISING FROM, OUT OF OR IN CONNECTION WITH THE SOFTWARE OR THE USE OR OTHER DEALINGS IN THE SOFTWARE.

## 11.2 Newtonsoft.Json

---

The MIT License (MIT) Copyright © 2020 Newtonsoft

Permission is hereby granted, free of charge, to any person obtaining a copy of this software and associated documentation files (the "Software"), to deal in the Software without restriction, including without limitation the rights to use, copy, modify, merge, publish, distribute, sublicense, and/or sell copies of the Software, and to permit persons to whom the Software is furnished to do so, subject to the following conditions:

The above copyright notice and this permission notice shall be included in all copies or substantial portions of the Software.

THE SOFTWARE IS PROVIDED "AS IS", WITHOUT WARRANTY OF ANY KIND, EXPRESS OR IMPLIED, INCLUDING BUT NOT LIMITED TO THE WARRANTIES OF MERCHANTABILITY, FITNESS FOR A PARTICULAR PURPOSE AND NONINFRINGEMENT. IN NO EVENT SHALL THE AUTHORS OR COPYRIGHT HOLDERS BE LIABLE FOR ANY CLAIM, DAMAGES OR OTHER LIABILITY, WHETHER IN AN ACTION OF CONTRACT, TORT OR OTHERWISE, ARISING FROM, OUT OF OR IN CONNECTION WITH THE SOFTWARE OR THE USE OR OTHER DEALINGS IN THE SOFTWARE.

## 11.3 ReactiveProperty

---

The MIT License (MIT)

Copyright (c) 2018 neuecc, xin9le, okazuki

Permission is hereby granted, free of charge, to any person obtaining a copy of this software and associated documentation files (the "Software"), to deal in the Software without restriction, including without limitation the rights to use, copy, modify, merge, publish, distribute, sublicense, and/or sell copies of the Software, and to permit persons to whom the Software is furnished to do so, subject to the following conditions:

The above copyright notice and this permission notice shall be included in all copies or substantial portions of the Software.

THE SOFTWARE IS PROVIDED "AS IS", WITHOUT WARRANTY OF ANY KIND, EXPRESS OR IMPLIED, INCLUDING BUT NOT LIMITED TO THE WARRANTIES OF MERCHANTABILITY, FITNESS FOR A PARTICULAR PURPOSE AND NONINFRINGEMENT. IN NO EVENT SHALL THE AUTHORS OR COPYRIGHT HOLDERS BE LIABLE FOR ANY CLAIM, DAMAGES OR OTHER LIABILITY, WHETHER IN AN ACTION OF CONTRACT, TORT OR OTHERWISE, ARISING FROM, OUT OF OR IN CONNECTION WITH THE SOFTWARE OR THE USE OR OTHER DEALINGS IN THE SOFTWARE.

## 11.4 System.ComponentModel.Annotations

---

The MIT License (MIT) Copyright (c) .NET Foundation and Contributors

All rights reserved.

Permission is hereby granted, free of charge, to any person obtaining a copy of this software and associated documentation files (the "Software"), to deal in the Software without restriction, including without limitation the rights to use, copy, modify, merge, publish, distribute, sublicense, and/or sell copies of the Software, and to permit persons to whom the Software is furnished to do so, subject to the following conditions:

The above copyright notice and this permission notice shall be included in all copies or substantial portions of the Software.

THE SOFTWARE IS PROVIDED "AS IS", WITHOUT WARRANTY OF ANY KIND, EXPRESS OR IMPLIED, INCLUDING BUT NOT LIMITED TO THE WARRANTIES OF MERCHANTABILITY, FITNESS FOR A PARTICULAR PURPOSE AND NONINFRINGEMENT. IN NO EVENT SHALL THE AUTHORS OR COPYRIGHT HOLDERS BE LIABLE FOR ANY CLAIM, DAMAGES OR OTHER LIABILITY, WHETHER IN AN ACTION OF CONTRACT, TORT OR OTHERWISE, ARISING FROM, OUT OF OR IN CONNECTION WITH THE SOFTWARE OR THE USE OR OTHER DEALINGS IN THE SOFTWARE.

## 11.5 Microsoft.Maui.Controls

---

The MIT License (MIT) Copyright (c) Microsoft Corporation

All rights reserved.

Permission is hereby granted, free of charge, to any person obtaining a copy of this software and associated documentation files (the "Software"), to deal in the Software without restriction, including without limitation the rights to use, copy, modify, merge, publish, distribute, sublicense, and/or sell copies of the Software, and to permit persons to whom the Software is furnished to do so, subject to the following conditions:

The above copyright notice and this permission notice shall be included in all copies or substantial portions of the Software.

THE SOFTWARE IS PROVIDED "AS IS", WITHOUT WARRANTY OF ANY KIND, EXPRESS OR IMPLIED, INCLUDING BUT NOT LIMITED TO THE WARRANTIES OF MERCHANTABILITY, FITNESS FOR A PARTICULAR PURPOSE AND NONINFRINGEMENT. IN NO EVENT SHALL THE AUTHORS OR COPYRIGHT HOLDERS BE LIABLE FOR ANY CLAIM, DAMAGES OR OTHER LIABILITY, WHETHER IN AN ACTION OF CONTRACT, TORT OR OTHERWISE, ARISING FROM, OUT OF OR IN CONNECTION WITH THE SOFTWARE OR THE USE OR OTHER DEALINGS IN THE SOFTWARE.

## 11.6 Microsoft.Maui.Controls.Compatibility

---

The MIT License (MIT) Copyright (c) Microsoft Corporation

All rights reserved.

Permission is hereby granted, free of charge, to any person obtaining a copy of this software and associated documentation files (the "Software"), to deal in the Software without restriction, including without limitation the rights to use, copy, modify, merge, publish, distribute, sublicense, and/or sell copies of the Software, and to permit persons to whom the Software is furnished to do so, subject to the following conditions:

The above copyright notice and this permission notice shall be included in all copies or substantial portions of the Software.

THE SOFTWARE IS PROVIDED "AS IS", WITHOUT WARRANTY OF ANY KIND, EXPRESS OR IMPLIED, INCLUDING BUT NOT LIMITED TO THE WARRANTIES OF MERCHANTABILITY, FITNESS FOR A PARTICULAR PURPOSE AND NONINFRINGEMENT. IN NO EVENT SHALL THE AUTHORS OR COPYRIGHT HOLDERS BE LIABLE FOR ANY CLAIM, DAMAGES OR OTHER LIABILITY, WHETHER IN AN ACTION OF CONTRACT, TORT OR OTHERWISE, ARISING FROM, OUT OF OR IN CONNECTION WITH THE SOFTWARE OR THE USE OR OTHER DEALINGS IN THE SOFTWARE.

## 11.7 Mopups

The MIT License (MIT) Copyright (c) 2023 Tyson Hooker,Maksym Koshovyi,Aswin P G, Kirill Lyubimov, Martijn Van Dijk, Shane Neuville

All rights reserved.

Permission is hereby granted, free of charge, to any person obtaining a copy of this software and associated documentation files (the "Software"), to deal in the Software without restriction, including without limitation the rights to use, copy, modify, merge, publish, distribute, sublicense, and/or sell copies of the Software, and to permit persons to whom the Software is furnished to do so, subject to the following conditions:

The above copyright notice and this permission notice shall be included in all copies or substantial portions of the Software. THE SOFTWARE IS PROVIDED "AS IS", WITHOUT WARRANTY OF ANY KIND, EXPRESS OR IMPLIED, INCLUDING BUT NOT LIMITED TO THE WARRANTIES OF MERCHANTABILITY, FITNESS FOR A PARTICULAR PURPOSE AND NONINFRINGEMENT. IN NO EVENT SHALL THE AUTHORS OR COPYRIGHT HOLDERS BE LIABLE FOR ANY CLAIM, DAMAGES OR OTHER LIABILITY, WHETHER IN AN ACTION OF CONTRACT, TORT OR OTHERWISE, ARISING FROM, OUT OF OR IN CONNECTION WITH THE SOFTWARE OR THE USE OR OTHER DEALINGS IN THE SOFTWARE.

## 11.8 CommunityToolkit.Maui

The MIT License (MIT) Copyright (c) Microsoft Corporation

All rights reserved.

Permission is hereby granted, free of charge, to any person obtaining a copy of this software and associated documentation files (the "Software"), to deal in the Software without restriction, including without limitation the rights to use, copy, modify, merge, publish, distribute, sublicense, and/or sell copies of the Software, and to permit persons to whom the Software is furnished to do so, subject to the following conditions:

The above copyright notice and this permission notice shall be included in all copies or substantial portions of the Software. THE SOFTWARE IS PROVIDED "AS IS", WITHOUT WARRANTY OF ANY KIND, EXPRESS OR IMPLIED, INCLUDING BUT NOT LIMITED TO THE WARRANTIES OF MERCHANTABILITY, FITNESS FOR A PARTICULAR PURPOSE AND NONINFRINGEMENT. IN NO EVENT SHALL THE AUTHORS OR COPYRIGHT HOLDERS BE LIABLE FOR ANY CLAIM, DAMAGES OR OTHER LIABILITY, WHETHER IN AN ACTION OF CONTRACT, TORT OR OTHERWISE, ARISING FROM, OUT OF OR IN CONNECTION WITH THE SOFTWARE OR THE USE OR OTHER DEALINGS IN THE SOFTWARE.

## 11.9 .NET Runtime

The MIT License (MIT) Copyright (c) .NET Foundation and Contributors

All rights reserved.

Permission is hereby granted, free of charge, to any person obtaining a copy of this software and associated documentation files (the "Software"), to deal in the Software without restriction, including without limitation the rights to use, copy, modify, merge, publish, distribute, sublicense, and/or sell copies of the Software, and to permit persons to whom the Software is furnished to do so, subject to the following conditions:

The above copyright notice and this permission notice shall be included in all copies or substantial portions of the Software. THE SOFTWARE IS PROVIDED "AS IS", WITHOUT WARRANTY OF ANY KIND, EXPRESS OR IMPLIED, INCLUDING BUT NOT LIMITED TO THE WARRANTIES OF MERCHANTABILITY, FITNESS FOR A PARTICULAR PURPOSE AND NONINFRINGEMENT. IN NO EVENT SHALL THE AUTHORS OR COPYRIGHT HOLDERS BE LIABLE FOR ANY CLAIM, DAMAGES OR OTHER LIABILITY, WHETHER IN AN ACTION OF CONTRACT, TORT OR OTHERWISE, ARISING FROM, OUT OF OR IN CONNECTION WITH THE SOFTWARE OR THE USE OR OTHER DEALINGS IN THE SOFTWARE.

## 11.10 .NET MAUI

---

The MIT License (MIT) Copyright (c) .NET Foundation and Contributors  
All rights reserved.

Permission is hereby granted, free of charge, to any person obtaining a copy of this software and associated documentation files (the "Software"), to deal in the Software without restriction, including without limitation the rights to use, copy, modify, merge, publish, distribute, sublicense, and/or sell copies of the Software, and to permit persons to whom the Software is furnished to do so, subject to the following conditions:

The above copyright notice and this permission notice shall be included in all copies or substantial portions of the Software. THE SOFTWARE IS PROVIDED "AS IS", WITHOUT WARRANTY OF ANY KIND, EXPRESS OR IMPLIED, INCLUDING BUT NOT LIMITED TO THE WARRANTIES OF MERCHANTABILITY, FITNESS FOR A PARTICULAR PURPOSE AND NONINFRINGEMENT. IN NO EVENT SHALL THE AUTHORS OR COPYRIGHT HOLDERS BE LIABLE FOR ANY CLAIM, DAMAGES OR OTHER LIABILITY, WHETHER IN AN ACTION OF CONTRACT, TORT OR OTHERWISE, ARISING FROM, OUT OF OR IN CONNECTION WITH THE SOFTWARE OR THE USE OR OTHER DEALINGS IN THE SOFTWARE.

# 12 Upgraded Additional Function List

This chapter describes the functions added by upgraded Pocket GOT version.

## Android version

Added or modified function	Compatible Pocket GOT version (Android version)
Supported: Alarm notification to a smart watch via mobile terminal	1.0.0.1
Compatible with Android 11	
Added: Alarm statuses (Checked, Reset) to be notified	1.0.0.2
Supported: Notification priority setting	
Supported: Reordering of the icons on the [Connected GOT list] screen	
Supported: [Alarm list] filtering	
Increased: Contents of the alarm notification	
Supported: Display of the input range on the [Alarm notification setting] screen and on the [GOT Mobile connection setting] screen	
Compatible with Android 12	1.0.0.3
Supported: Alarm re-notification	
Added: [Alarm list] button to the alarm notification display	
Added: [GOT Mobile] button to the alarm notification display	
Supported: Display of the elapsed time of alarms	
Supported: Sorting of unread alarms	
Supported: Display of the battery control disabling request screen	
Supported: GS25	
Compatible with Android 13 to 14	1.1.0.0
Supported: Display of the notification permission screen	
Display of the mobile terminal settings changed screen	
Compatible with GT37 and GT SoftGOT3000	
Supported: Selection of the GOT series on the [Basic Setting] screen	1.2.0.0
Compatible with Android 15	
Support ended: Android 8	
Added: A setting to select the use of HTTPS connection on the [Alarm notification setting] screen and the [GOT Mobile connection setting] screen	
Supported: Performing the operation configured for the contactless tag	

## iOS and iPadOS versions

Added or modified function	Supported Pocket GOT version (iOS and iPadOS versions)
Supported: Display of the notification permission screen	1.0.0
Compatible with iOS 17	1.1.0
Compatible with iPadOS 15 to 17	
Compatible with GT37 and GT SoftGOT3000	
Supported: Selection of the GOT series on the [Basic Setting] screen	
Compatible with iOS 18	1.2.0
Compatible with iPadOS 18	
Added: A setting to select the use of HTTPS connection on the [Alarm notification setting] screen and the [GOT Mobile connection setting] screen	
Supported: Performing the operation configured for the contactless tag	

# MEMO

---



# REVISIONS

\* The manual number is given on the bottom left of the back cover.

Revision date	* Manual No.	Revision
February 2022	SH(NA)-082512ENG-A	First edition
October 2022	SH(NA)-082512ENG-B	Compatible with Pocket GOT version 1.0.0.2 (Android version) <ul style="list-style-type: none"> <li>• Added: Alarm statuses (Checked, Reset) to be notified</li> <li>• Supported: Notification priority setting</li> <li>• Supported: Reordering of the icons on the [Connected GOT list] screen</li> <li>• Supported: [Alarm list] filtering</li> <li>• Increased: Contents of the alarm notification</li> </ul>
March 2023	SH(NA)-082512ENG-C	Compatible with Pocket GOT version 1.0.0.3 (Android version) <ul style="list-style-type: none"> <li>• Compatible with Android 12</li> <li>• Supported: Alarm re-notification</li> <li>• Added: [Alarm list] button to the alarm notification display</li> <li>• Added: [GOT Mobile] button to the alarm notification display</li> <li>• Supported: Display of the elapsed time of alarms</li> <li>• Supported: Sorting of unread alarms</li> <li>• Supported: Display of the battery control disabling request screen</li> <li>• Supported: GS25</li> </ul>
March 2024	SH(NA)-082512ENG-D	Compatible with Pocket GOT (iOS version) version 1.0.0 <ul style="list-style-type: none"> <li>• Compatible with iOS 15 to 16</li> </ul>
March 2025	SH(NA)-082512ENG-E	Compatible with Pocket GOT version 1.1.0.0 (Android version) <ul style="list-style-type: none"> <li>• Compatible with Android 13 to 14</li> <li>• Supported: Display of the notification permission screen</li> <li>• Display of the mobile terminal settings changed screen</li> </ul> Compatible with Pocket GOT version 1.1.0 (iOS and iPadOS versions) <ul style="list-style-type: none"> <li>• Compatible with iOS 17</li> <li>• Compatible with iPadOS 15 to 17</li> </ul>
December 2025	SH(NA)-082512ENG-F	Compatible with Pocket GOT version 1.2.0.0 (Android version) <ul style="list-style-type: none"> <li>• Compatible with Android 15</li> <li>• Support ended: Android 8</li> <li>• Added: A setting to select the use of HTTPS connection on the [Alarm notification setting] screen and the [GOT Mobile connection setting] screen</li> <li>• Supported: Performing the operation configured for the contactless tag</li> </ul> Compatible with Pocket GOT version 1.2.0 (iOS and iPadOS versions) <ul style="list-style-type: none"> <li>• Compatible with iOS 18</li> <li>• Compatible with iPadOS 18</li> <li>• Added: A setting to select the use of HTTPS connection on the [Alarm notification setting] screen and the [GOT Mobile connection setting] screen</li> <li>• Supported: Performing the operation configured for the contactless tag</li> </ul> Compatible with GT37 and GT SoftGOT3000 <ul style="list-style-type: none"> <li>• Supported: Selection of the GOT series on the [Basic Setting] screen</li> </ul>

This manual confers no industrial property rights or any rights of any other kind, nor does it confer any patent licenses. Mitsubishi Electric Corporation cannot be held responsible for any problems involving industrial property rights which may occur as a result of using the contents noted in this manual.

©2022 MITSUBISHI ELECTRIC CORPORATION

# INTELLECTUAL PROPERTY RIGHTS

---

## ■Trademarks

Microsoft, Microsoft Access, Excel, SQL Server, Visual Basic, Visual C++, Visual C#, Windows, Windows NT, Windows Server, and Windows Vista are trademarks of the Microsoft group of companies.

Unicode is either a registered trademark or a trademark of Unicode, Inc. in the United States and other countries.

Android, Google Chrome, Google Play, and Google Play Logo are either trademarks or registered trademarks of Google LLC.

SHARP and AQUOS are either registered trademarks or trademarks of Sharp Corporation.

iOS and iPadOS are the names of Apple Inc.'s operating system.

iOS and iPadOS are registered trademarks or trademarks of Cisco Systems, Inc. or its affiliates in the United States and other countries, and are used under license.

App Store and iCloud are service marks of Apple Inc.

Apple and the Apple logo are trademarks of Apple Inc. registered in the United States and other countries.

Bluetooth is either a trademark or registered trademark of Bluetooth SIG, Inc.

The company names, system names and product names mentioned in this technical bulletin are either registered trademarks or trademarks of their respective companies.

In some cases, trademark symbols such as "™" or "®" are not specified in this technical bulletin.

## ■Copyrights

The screens (screenshots) are used in accordance with the Microsoft Corporation guideline.



SH(NA)-082512ENG-F(2512)MEE

MODEL: -

## **mitsubishi electric corporation**

HEAD OFFICE: TOKYO BLDG., 2-7-3, MARUNOUCHI, CHIYODA-KU, TOKYO 100-8310, JAPAN  
NAGOYA WORKS: 1-14, YADA-MINAMI 5-CHOME, HIGASHI-KU, NAGOYA 461-8670, JAPAN

When exported from Japan, this manual does not require application to the  
Ministry of Economy, Trade and Industry for service transaction permission.

Specifications subject to change without notice.