

R7 Series Compact Remote I/O

FEATURES

- Compact, all-in-one package
- Built-in connector to add an extension module
- Analog and discrete signals can be mixed
- Supports Modbus, DeviceNet and CC-Link

R7 SERIES REMOTE I/O

CC-Link

DeviceNet

Modbus

R7

Compact All-in-one Package



Palm-top size compact module can handle 4 analog or 16 discrete signals. The I/O, network and power input modules are in one package.

Extension Module



16 discrete input or output module can be attached to the base module. Analog and discrete signals can be mixed by combining a discrete I/O module with an analog module.

1500 Vac Isolation



Fully isolated between I/O, network and power input. Channel-to-channel isolation is also provided.

Visit Your I/O Superstore! – <http://www.m-system.com/>

MODEL SELECTIONS

Remote I/O R7 series

BASIC MODULE



Network Type	CC-Link	DeviceNet	Modbus
Function	Model No.	Model No.	Model No.
16-point discrete input	R7C-DA16	R7D-DA16	R7M-DA16
16-point NPN contact output	R7C-DC16A	R7D-DC16A	R7M-DC16A
16-point PNP contact output	R7C-DC16B	R7D-DC16B	R7M-DC16B
4-point DC voltage/current input	R7C-SV4	R7D-SV4	R7M-SV4
4-point thermocouple input	R7C-TS4	R7D-TS4	R7M-TS4
4-point RTD input	R7C-RS4	R7D-RS4	R7M-RS4
2-point DC voltage output	R7C-YV2	R7D-YV2	R7M-YV2
2-point DC current output	R7C-YS2	R7D-YS2	R7M-YS2

EXTENSION MODULE



Network Type	CC-Link	DeviceNet	Modbus
Function	Model No.	Model No.	Model No.
16-point discrete input extension	R7C-EA16	R7D-EA16	R7M-EA16
16-point NPN contact output extension	R7C-EC16A	R7D-EC16A	R7M-EC16A
16-point PNP contact output extension	R7C-EC16B	R7D-EC16B	R7M-EC16B

GENERAL SPECIFICATIONS

Remote I/O R7 series

Power input: 24 Vdc $\pm 10\%$
Dielectric strength: 1500 Vac @ 1 minute
Insulation resistance: ≥ 100 M Ω @ 500 Vdc

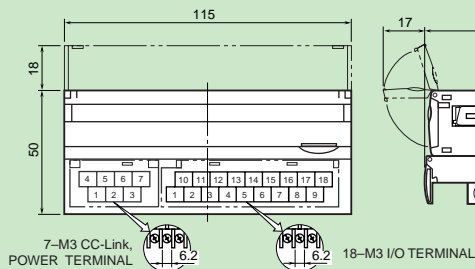
Operating temperature: -10 to +55°C
Operating humidity: 30 to 90% RH (no condensing)
Ambient atmosphere: No corrosive gas or heavy dust

Storage temperature: -20 to +65°C
Mounting: DIN rail (35 mm wide)
Screw terminal material: Nickel-plated steel

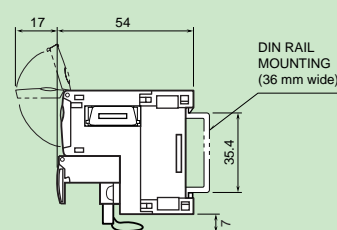
EXTERNAL DIMENSIONS (CC-Link example)

Remote I/O R7 series

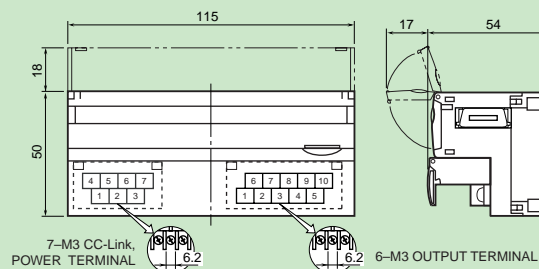
BASIC MODULE



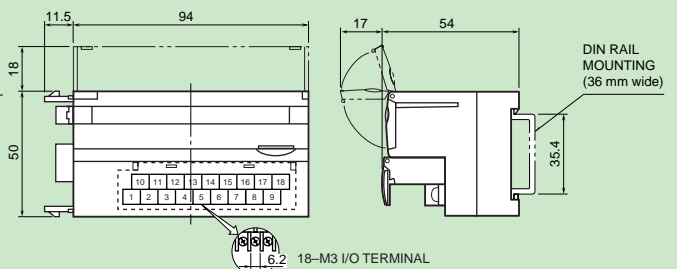
• R7C-TS4



ANALOG OUTPUT MODULE



EXTENSION MODULE



Unit: mm

• Specifications are subject to change without notice. • and **M-SYSTEM** are registered trademarks of M-System Co., Ltd., registered in Japan, the United States, and other countries.

M-SYSTEM CO., LTD.

5-2-55 Minamitsumori, Nishinari-ku, Osaka 557-0063 JAPAN
 Tel: +81(0)6-6659-8201 Fax: +81(0)6-6659-8510

Visit us : www.m-system.com Contact us : info@m-system.co.jp

The logo for FAPRO GROUP is written in a bold, orange, sans-serif font, slanted upwards from left to right. It is positioned over a vertical blue banner that features a stylized image of two people shaking hands against a background of a world map and a grid pattern.

熊麒企業股份有限公司
FAPRO ENTERPRISE CO., LTD.

總公司:台北縣五股鄉五股工業區五權七路22號7樓
TEL: (02) 2298-1399 FAX: (02) 2298-1319
台南所:台南市東門路二段299號8樓
TEL: (06) 234-1899 FAX: (06) 234-5100
<http://www.fapro.com.tw>
e-mail:public@fapro.com.tw



熊匠自動化股份有限公司
CLIMAX AUTOMATION CO., LTD.

台中市西屯路二段256巷6號14樓之6
TEL: (04) 2706-5756 FAX: (04) 2706-0872

昆山熊瑞貿易有限公司

江蘇省昆山市青陽南路308號8樓804室
TEL: (0512) 5738-9368 FAX: (0512) 5738-9369