

**PC CONFIGURATOR CABLE
MODEL: COP-UM / COP-US**

DRIVER INSTALLATION MANUAL

CONTENTS

1. INTRODUCTION	3
1.1. OUTLINE.....	3
1.2. PC REQUIREMENTS.....	3
2. SETUP	4
2.1. SETUP BY WINDOWS UPDATE	4
2.1.1 INSTLATTION	4
2.1.2 UNINSTLLATION	4
2.2. SETUP BY DOWNLOADING DRIVER SOFTWARE.....	4
2.2.1 INSTALLATION.....	4
2.2.2 UNINSTALLATION	4
2.3. HOW TO MAKE YOUR PC RECOGNIZE COP-UM/US VIA USB PORT.....	5
2.4. HOW TO CHANGE COM PORT NUMBER.....	6

1. INTRODUCTION

1.1. OUTLINE

This user's manual provides the necessary information and describes the procedures for connecting successfully some of our products to a PC by using a USB device. COP-UM is a device with a modular jack connector. COP-US is a device with a miniature jack connector.

Please refer to the following steps for a proper use of COP-UM/US (hereafter called as "device").

- Installation of the device driver in your PC
- Device connection to the USB port of your PC

1.2. PC REQUIREMENTS

The information and procedures provided in this guide are only operative with the following systems.

PC	Compatible with IBM PC
OS	Windows 7 (32-bit / 64-bit) Windows 8.1 (32-bit / 64-bit) Windows 10 (32-bit / 64-bit)

Note: The software may not function in certain conditions. Windows, which operates with except Intel or Intel compatible CPU, (Windows RT etc.) is not supported.

2. SETUP

COP-UM/US can be set up automatically by Windows Update, or manually by downloading and installing the dedicated driver software from the attached CD or our web site.

Choose either way depending on conditions such as availability of internet connection or Windows Update.

2.1. SETUP BY WINDOWS UPDATE

2.1.1 INSTLATION

If the PC is connected to the internet, connect COP-UM/US to the USB port of your PC to automatically install the driver software by Windows Update.

In this way, the COP-UM/US is enabled without requiring manual installation of the driver software.

If the driver software is not installed automatically by Windows Update when the COP-UM/US is connected to the PC for the first time, automatic installation may not be executed afterwards even if the device is removed and re-inserted. In such a case, take any of the following steps.

- a) Execute Windows Update from the Settings menu or the Control Panel.
- b) Update the driver software from the Device Manager.
- c) Remove and insert the device from the USB port after uninstalling the driver from the Device Manager.

Note: Windows Update may not work depending on the network environment or the Computer Management settings of the PC.

2.1.2 UNINSTLLATION

To remove the COP-UM/US installed by Windows Update, do so from the Device Manager.

2.2. SETUP BY DOWNLOADING DRIVER SOFTWARE

2.2.1 INSTALLATION

Download the driver software from the attached CD or our web site.

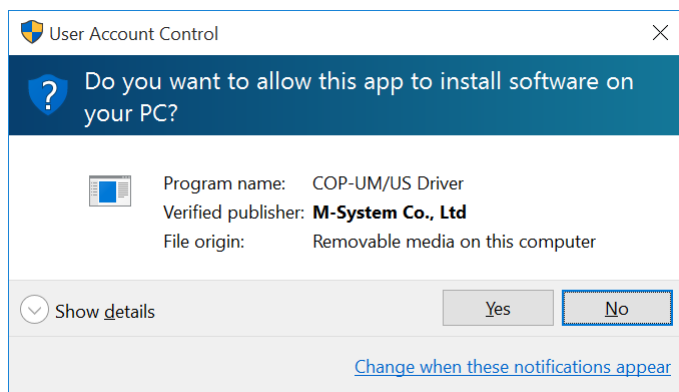
Decompress it, if necessary, and execute "setup.exe."

Then, follow the instructions on the installer to complete the installation.

Note: Make sure that COP-UM/US is not connected to USB port of your PC during the installation.

Windows Administrator account rights are required in order to install the driver software.

If the User Account Control dialog box appears, click [Yes] to continue the installation.



2.2.2 UNINSTALLATION

To remove the driver software installed by "setup.exe," go to:

- Windows 10 Settings > Apps and Features; or
Windows 8.1 or earlier Control Panel > Add/Remove Programs.

Then, choose COP-UM/US Driver X.X.X (X indicates the version number) from the list. Click [Uninstall].

2.3. HOW TO MAKE YOUR PC RECOGNIZE COP-UM/US VIA USB PORT

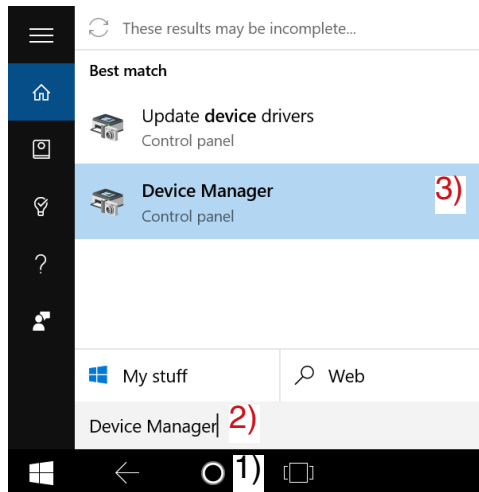
Windows recognizes the device connecting it to the USB port of your computer after installing the driver software and installs it automatically. It may take for a while to recognize COP-UM/US.

Note: We recommend connecting always the device in the same USB port. Once the PC has recognized the device allocation on a selected port, an error might occur if it is connected it to a different USB port.

By displaying “Device Manager” with procedure below, confirm if Windows recognizes COP-UM-US correctly.

■ HOW TO CONFIRM THE “DEVICE MANAGER”

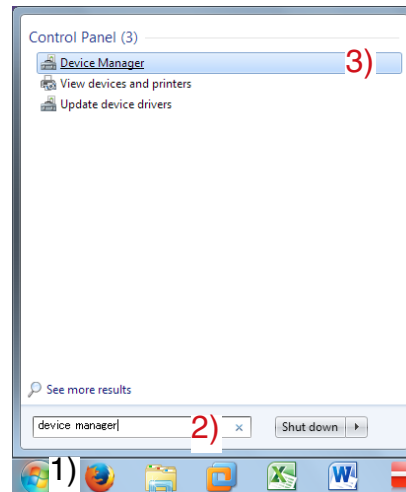
For Windows 10



- 1) Touch cortana icon in the task bar.*
- 2) Enter “Device Manager” into displayed column.
- 3) Touch or click “Device Manager” displayed in Best match.

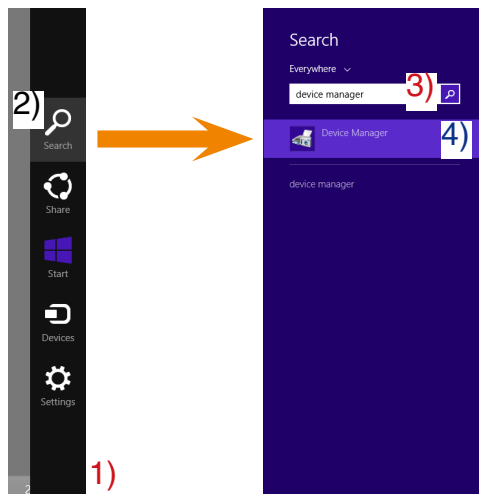
For Windows 10 with tablet mode off, without touching cortana icon, search column is displayed in the task bar.

For Windows 7



- 1) Click “Start”.
- 2) Enter “Device Manager” into displayed search column.
- 3) Click “Device Manager” displayed in the results.

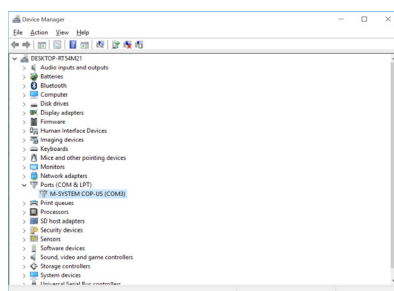
For Windows 8.1



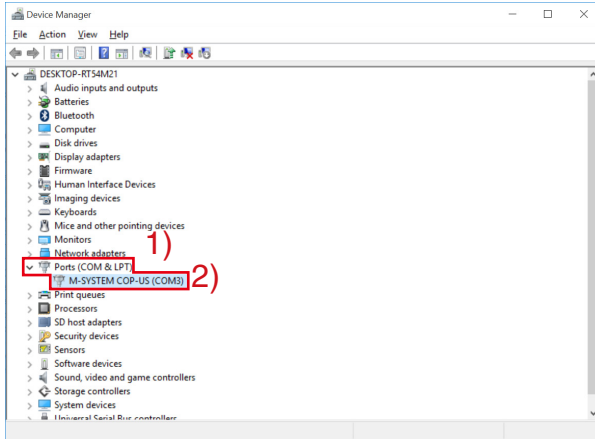
- 1) Move mouse cursor to upper right or lower right of display or swipe from the right end of the display to inside or press “C” key while pressing “Windows” key to display “Charm”.
- 2) Choose “Search” in the charm.
- 3) Enter “Device Manager” into displayed search column.
- 4) Choose “Device Manager” displayed in the results.

After “Device Manager” is displayed by procedure above, click “Ports (COM & LPT)”

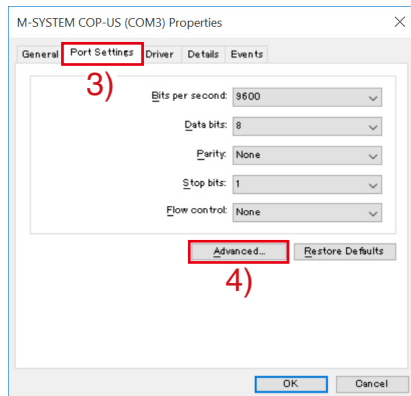
Windows recognizes COP-UM or COP-US correctly, if there is “M-SYSTEM COP-US” or “M-SYSTEM COP-UM”



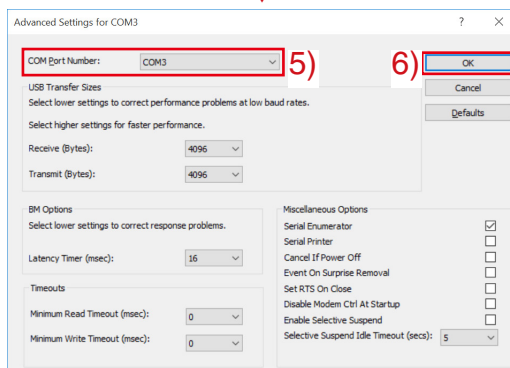
2.4. HOW TO CHANGE COM PORT NUMBER



- 1) Click "Ports (COM & LPT)" on the "Device Manager"
- 2) Double click the "M-SYSTEM COP-US" or "M-SYSTEM COP-UM"



- 3) Click "Port Settings"
- 4) Click "Advanced..."



- 5) The allocation for COM port number can be changed with "COM Port Number:."
- 6) Click "OK" to enable the change you made.